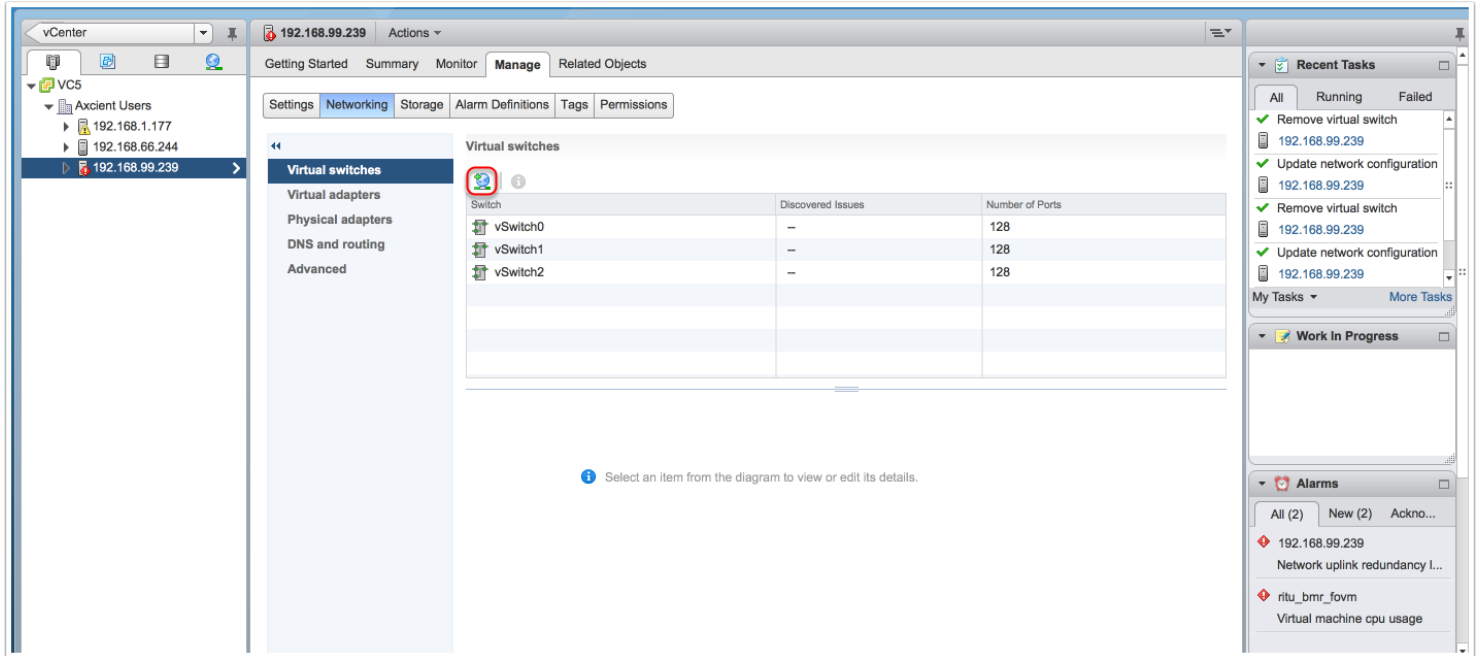


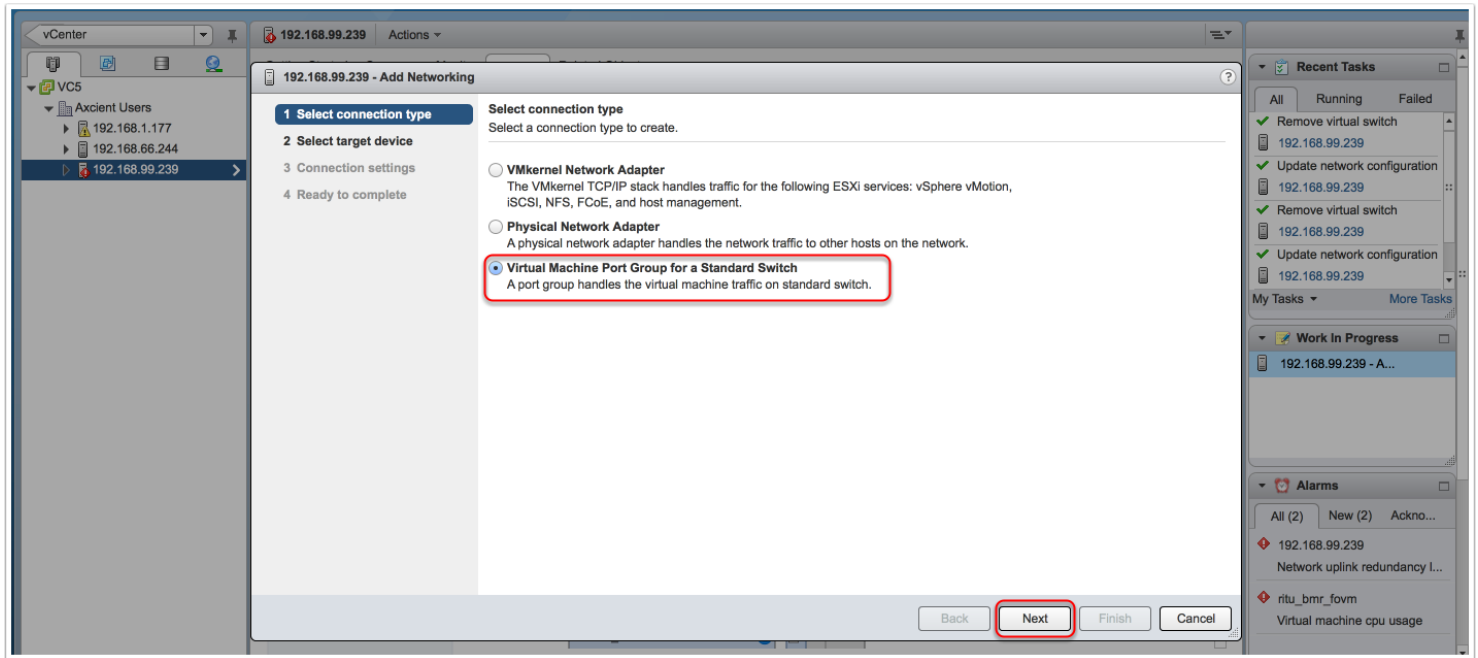
# Migration Steps for Axcient Appliance: virtual to virtual

## Create a new vSwitch for the unused NIC



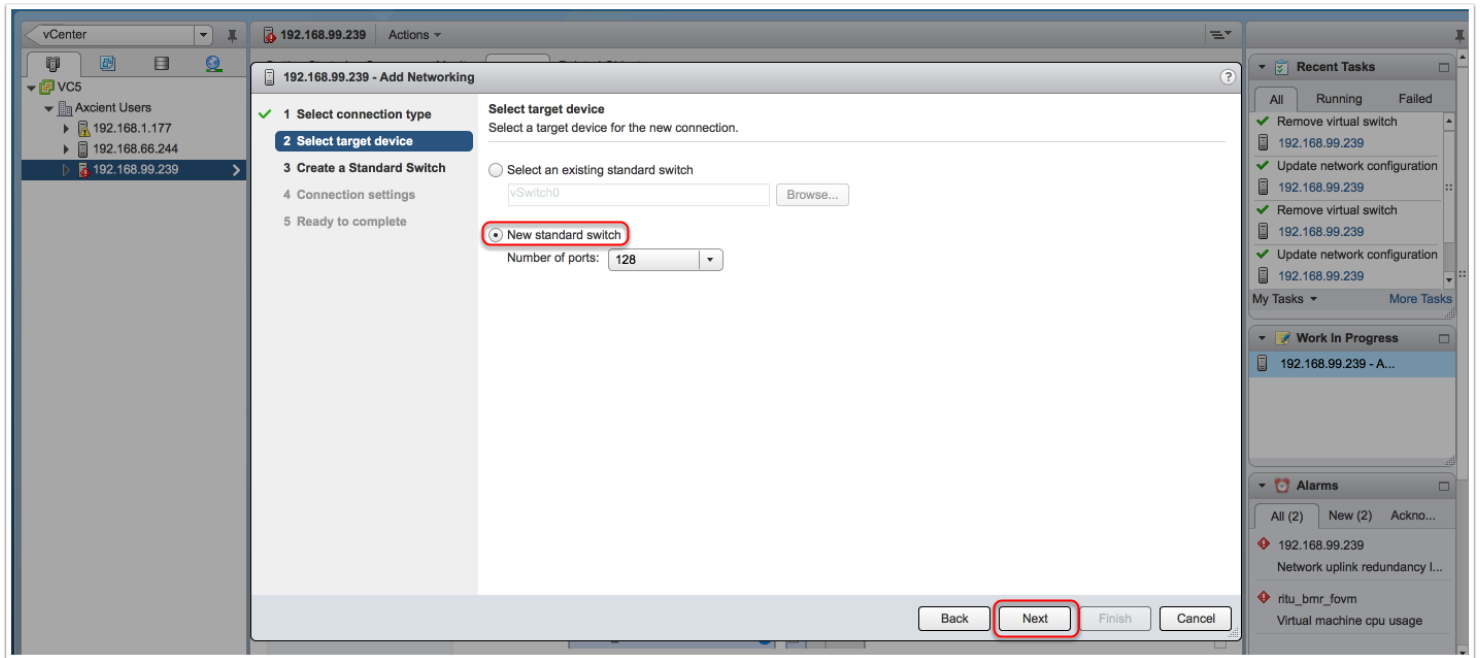
Select the world icon to create a new vSwitch

## Select connection type



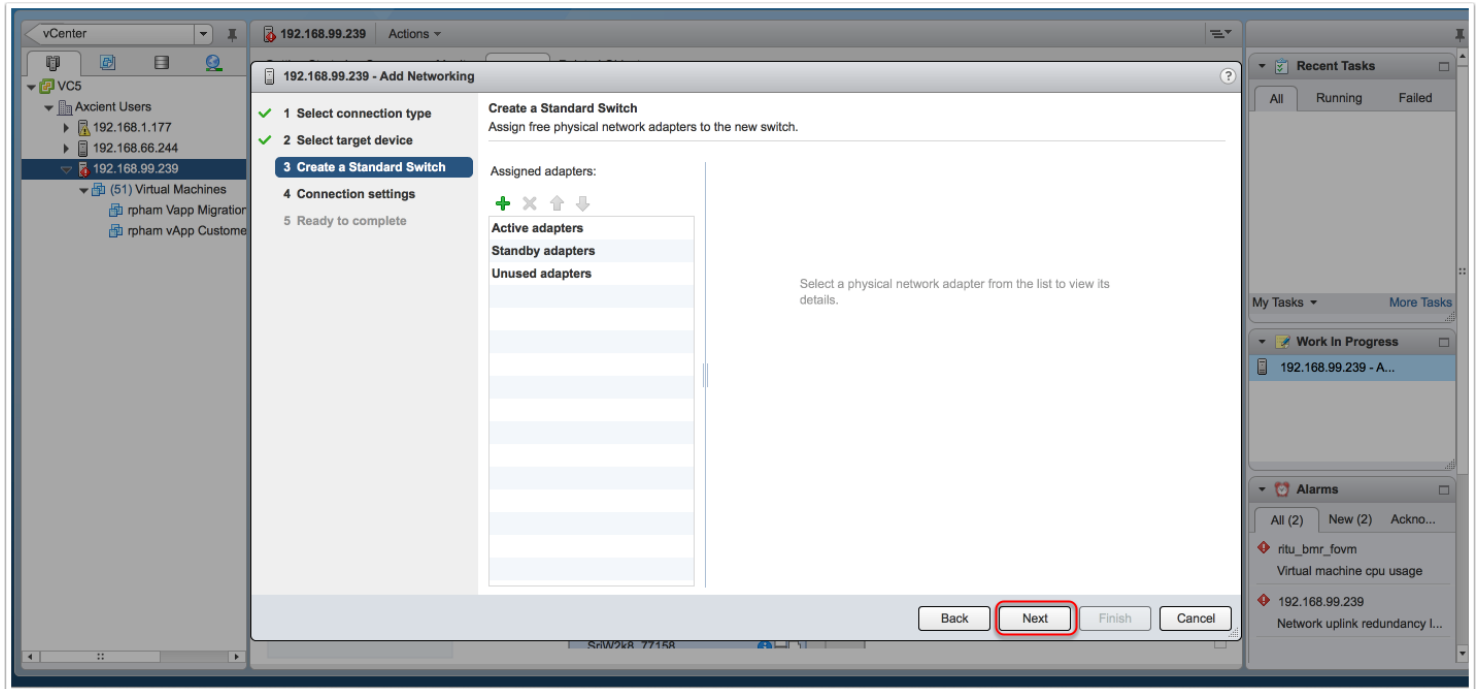
Select the connection type to be "Virtual Machine Port Group for a Standard Switch", and then select the "Next" button.

## Select target device



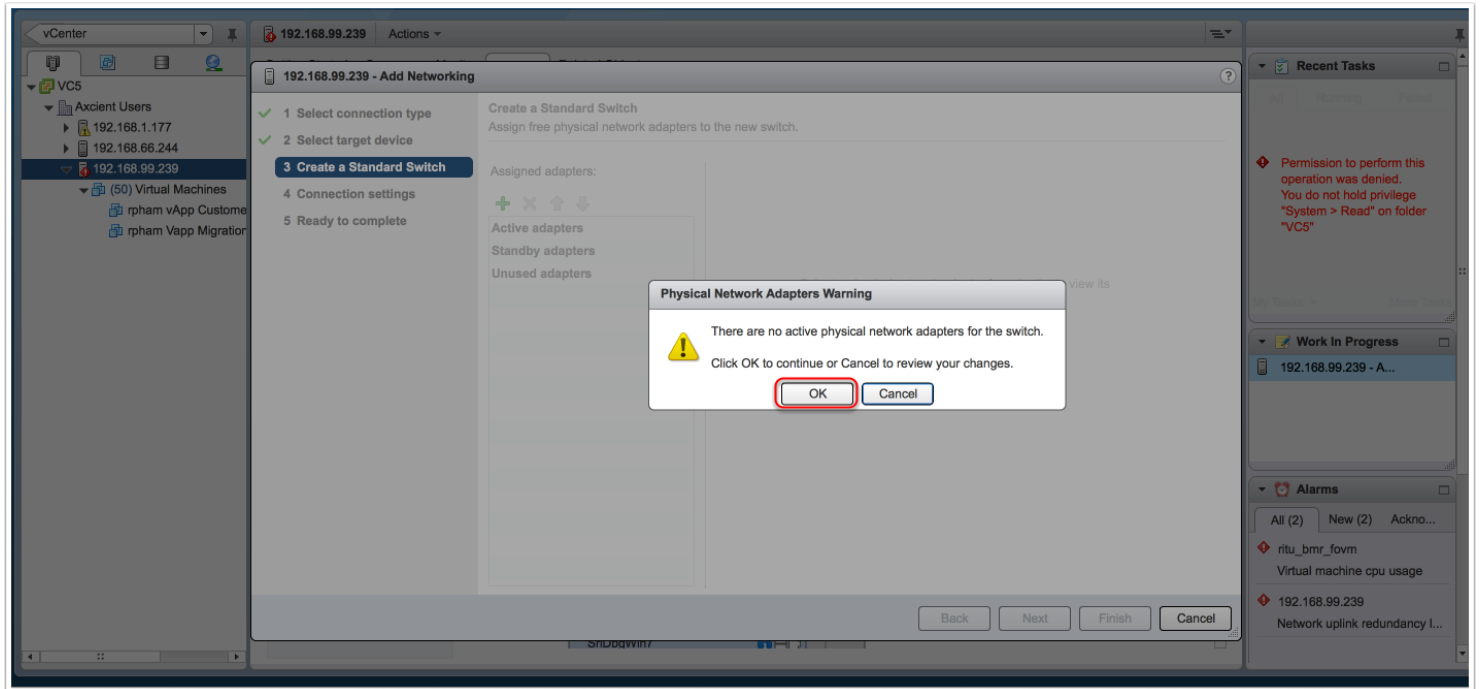
Select the "New standard switch" radio button, and then select the "Next" button.

## Assign physical NIC



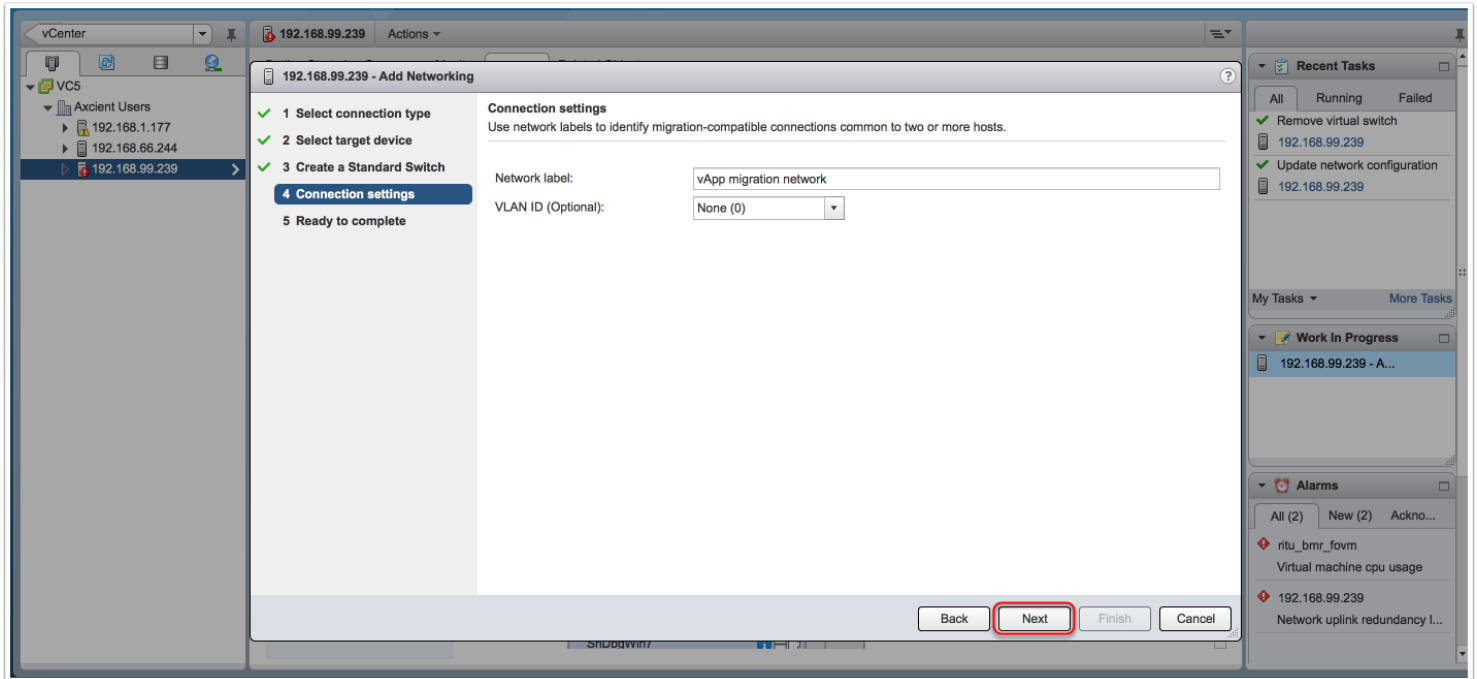
Select the "Next" button.

## Accept warning



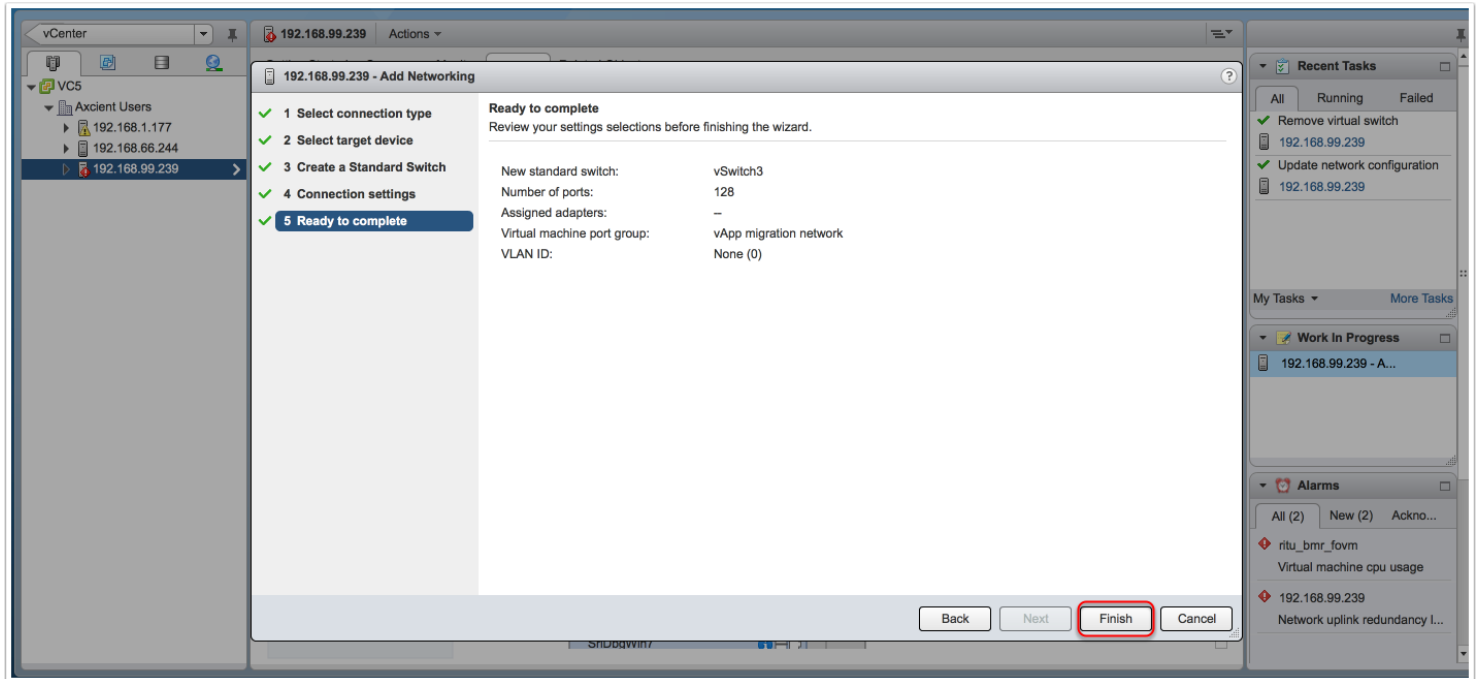
Click "OK" when the warning window displays. Since two virtual appliances are going to be connected on the same switch - no physical NIC is needed.

## Provide a label for the vSwitch



Create a label and then select the "Next" button.

## Validate vSwitch Setup



Validate the vSwitch's setup and select the "Finish" button.

## Next Steps

At this point you have setup the vSwitch. Now you will connect both Axcient virtual appliances (i.e. the migration source and target) to this vSwitch. You will do this by adding a secondary NIC on each VM that will be connected to the vSwitch.

## Edit the virtual settings on first vApp

The screenshot shows the vCenter interface. On the left, the 'vCenter' tree view shows a hierarchy: 'VC5' > 'Axcient Users' > '192.168.1.177' > '192.168.66.244' > '192.168.99.239' > '(50) Virtual Machines'. The 'rpham Vapp Migration 99.253' vApp is selected. The right pane shows the 'Getting Started' tab for this vApp. It includes a 'What is a Virtual Machine?' section with text explaining virtual machines and a diagram showing a 'Cluster' of hosts, 'Virtual Machines' running on a 'Host', and a 'Datacenter' connected to a 'vCenter Server' and a 'vSphere Client'. Below this, the 'Basic Tasks' section lists: 'Power on the virtual machine', 'Power Off the virtual machine', 'Suspend the virtual machine', and 'Edit virtual machine settings' (which is highlighted with a red box). The 'Explore Further' section lists links to learn more about guest operating systems, virtual machines, and templates.

Starting with your first vApp - select the "Edit virtual machine settings".



## Select NIC card

**rpham Vapp Migration 99.253 - Edit Settings**

Virtual Hardware | VM Options | SDRS Rules | vApp Options

CPU	2	
Memory	4096	MB
Hard disk 1	12.207032203674316	GB
Hard disk 2	256.0000009536743	GB
SCSI controller 0	LSI Logic Parallel	
Network adapter 1	99 Network	<input checked="" type="checkbox"/> Connect...
Video card	Specify custom settings	
VMCI device		
USB xHCI controller	USB 3.0	
Other Devices		

New device: 1 Network 2 Add

Compatibility: ESXi 5.1 and later (VM version 9) OK Cancel

In the settings page you will use the dropdown (1) to select the NIC card. Then you will select the "Add" button (2).

## Select vSwitch network

**rpham Vapp Migration 99.253 - Edit Settings**

Virtual Hardware | VM Options | SDRS Rules | vApp Options

- CPU: 2
- Memory: 4096 MB
- Hard disk 1: 12.207032203674316 GB
- Hard disk 2: 256.0000009536743 GB
- SCSI controller 0: LSI Logic Parallel
- Network adapter 1: 99 Network ☒ Connect...
- Video card: Specify custom settings
- VMCI device
- USB xHCI controller: USB 3.0
- Other Devices
- New Network**: 66 Network ☒ Connect...
  - 66 Network
  - 77 Network
  - 99 Network
  - VM Network
  - vApp migration network**
  - Show more networks...

New device: Network Add

Compatibility: ESXi 5.1 and later (VM version 9)

**OK** Cancel

The new NIC will appear on the left side of the settings window with a dropdown next to it. Through the dropdown select the vSwitch (based on the label that you previously gave it). Then select the "OK" button.

## vApp Settings

**rpham Vapp Migration 99.253 - Edit Settings**

Virtual Hardware | VM Options | SDRS Rules | vApp Options

CPU	2	
Memory	4096	MB
Hard disk 1	12.207032203674316	GB
Hard disk 2	256.0000009536743	GB
SCSI controller 0	LSI Logic Parallel	
Network adapter 1	99 Network	<input checked="" type="checkbox"/> Connect...
Network adapter 2	vApp migration network	<input checked="" type="checkbox"/> Connect...
Video card	Specify custom settings	
VMCI device		
USB xHCI controller	USB 3.0	
Other Devices		

New device: ----- Select ----- Add

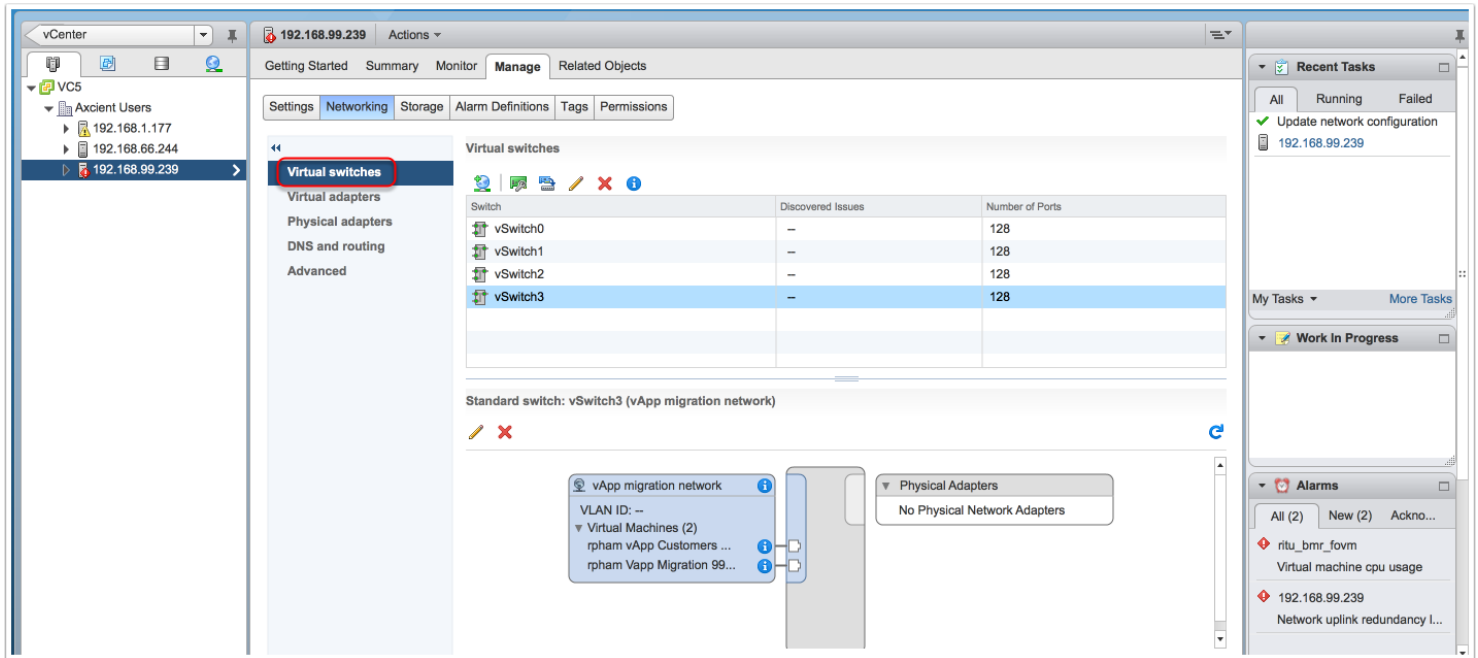
Compatibility: ESXi 5.1 and later (VM version 9) OK Cancel

Edit the settings of the vApp once again to verify that the NIC was added. You should see something similar to the above image where "Network adapter 2" is connected to the vSwitch that you created.

## Repeat the above steps for the second vApp

Repeat the above steps to add the secondary NIC to the second vApp

## Verify that both virtual appliances are connected to the vSwitch



The "Virtual switches" pane should show that the two virtual machines are connected to each other.

Please contact [Axcient support](#) for assistance with the next migration steps.