



# Axcient Integrated Lights Out Guide

**NOTICE**

UNLESS EXPRESSLY SET FORTH IN A WRITTEN AGREEMENT SIGNED BY AN AUTHORIZED REPRESENTATIVE OF AXCIENT, INC., AXCIENT MAKES NO WARRANTY OR REPRESENTATION OF ANY KIND WITH RESPECT TO THE INFORMATION CONTAINED HERIN, INCLUDING WARRANTY OF MERCHANTABILITY AND FITNESS FOR A PURPOSE.

Axcient assumes no responsibility or obligation of any kind for any errors contained herein or in connection with the furnishing, performance, or use of this document. This document contains information that is property of Axcient, Inc. This document may not be copied, reproduced, reduced to any electronic medium or machine readable form, or otherwise duplicated, and the information herein may not be used, disseminated or otherwise disclosed, except with the prior written consent of Axcient.

The information contained in this document is subject to change without notice.

All trademarks and registered trademarks are the property of their respective holders.

# TOC

<b>Introduction</b> .....	<b>3</b>
Preparing the Appliance .....	3
Default iLO Login Credentials .....	4
<b>G6 Appliance iLO Configuration</b> .....	<b>5</b>
<b>G7 and G8 Appliance iLO Configuration</b> .....	<b>7</b>
<b>G9 Appliance iLO Configuration</b> .....	<b>10</b>
Configure Network Settings .....	10
Configure User Credentials .....	12
<b>Appliance Management Ports</b> .....	<b>14</b>
Tower Appliance .....	14
1U Appliance .....	15
2U Appliance .....	15

# Introduction

This guide describes how to configure the built in Integrated Lights-Out (iLO) feature. The iLO feature allows the user to remotely reboot, power off or power on an Axcient appliance. The iLO can be configured at any time but Axcient recommends configuring the iLO during the initial installation as configuration requires physical access to the appliance.

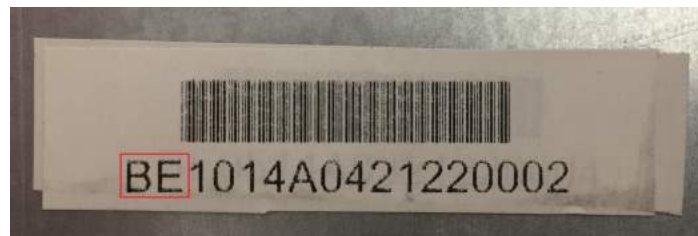
This guide includes the following sections:

- iLO 100 configuration for G6 appliances.
- iLO 3 or 4 configuration for G7 and G8 appliances.
- iLO 4 configuration for G9 appliances.

The model type of the appliance is indicated by the first two letters of the serial number:

- G6 appliances: AA, AB, AC, AD, or BB
- G7 appliances: AF, AG, AH, BE, or BG
- G8 appliances: BJ, BK, or BL
- G9 appliances: BM, BN or BP

*Figure 1 - Example of Appliance Serial Number*



Serial numbers are located on the back of the appliance on Tower appliances, and on the top-front corner next to the hard drive bays for 1U and 2U appliances.

## Preparing the Appliance

The user will need to connect a monitor and keyboard to the Axcient appliance in order to configure the iLO port. A lower resolution monitor will be required in order to avoid any display issues. New, high resolution monitors can result in display issues and the inability to access the appliance BIOS.

An Ethernet cable must be connected to the iLO Management Port. On the back of the Axcient appliance, do one of the following:

1. If there is a port labeled **Mgmt.**, connect an Ethernet cable to this port to allow network access.
2. If there is no port labeled **Mgmt.**, connect an Ethernet cable to **Port 1**.

Please note that in Scenario 1, the iLO Ethernet cable is not a replacement for the appliance network cable. A second Ethernet cable must be connected to Port 1 in order to give network access to the appliance.

In Scenario 2, the iLO and network port are shared by Port 1.

This guide will assume that the user has plugged in a monitor and keyboard, and connected an Ethernet cable to the appropriate iLO port for the appliance.

## Default iLO Login Credentials

The default log in credentials can be found on the Axcient appliance.

For the 1U and 2U appliances, the default iLO credentials are on a sticker located on the top of the appliance, near the front of the appliance.

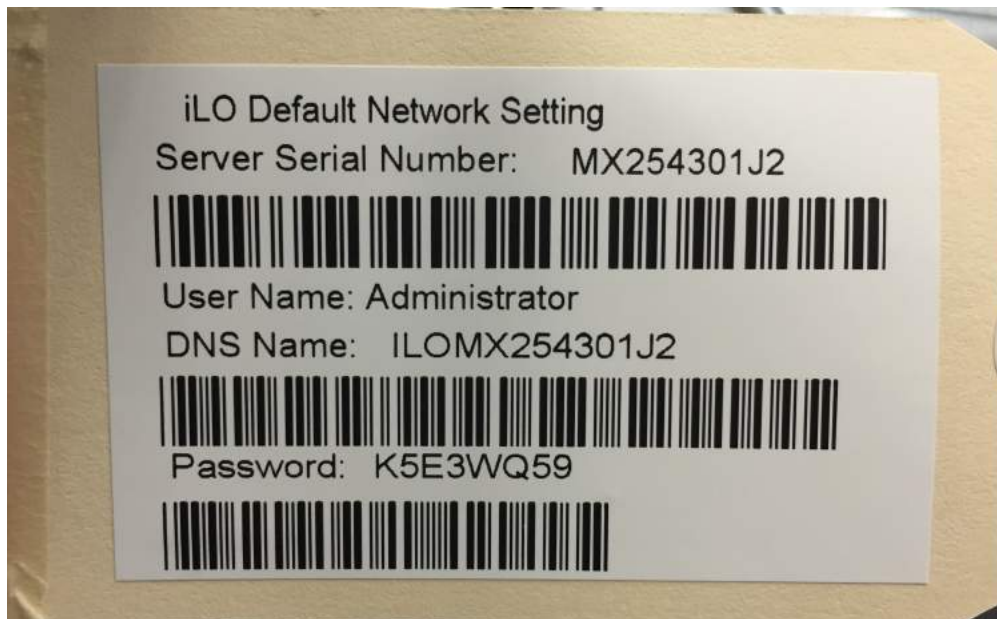
For the tower appliances, a tag is attached to the back of the appliance containing a sticker with the default iLO credentials, or on a sticker located on the top of the appliance.

In the event the default credentials are not included with the appliance, the user will need to either create a new user or edit the existing Administrator user.

*Figure 2 - Example of iLO Default Sticker for U Form Factor Appliances*



*Figure 3 - Example of iLO Default Sticker from a Tower Appliance*

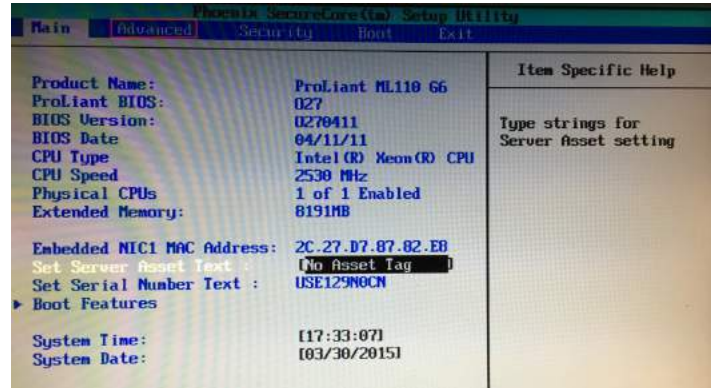


# G6 Appliance iLO Configuration

## STEP 1

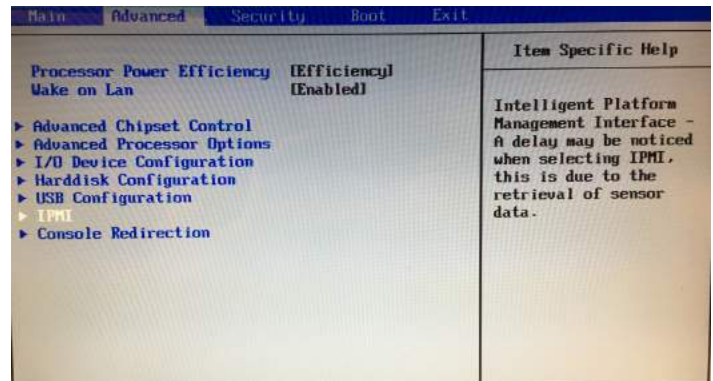
Power on the Axcient appliance and press the F10 key when prompted to enter the ROM-based setup.

The *Main* tab will appear. Navigate to the *Advanced* tab.



## STEP 2

The *Advanced* screen will appear. Select the *IPMI* option from the menu.

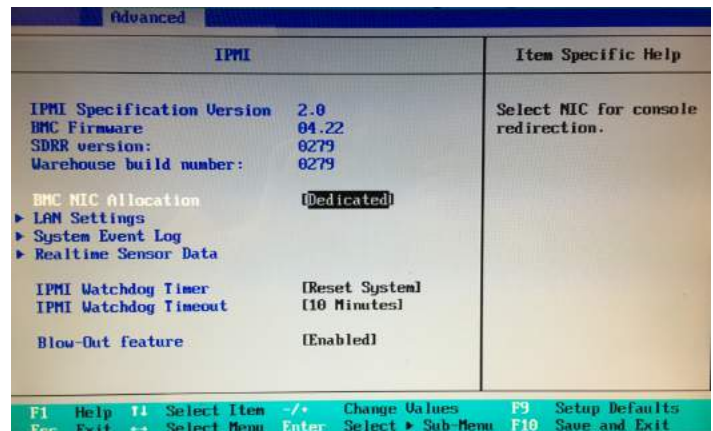


## STEP 3

In the *IPMI* screen, navigate to the *BMC NIC Allocation* field. There are two G6-based appliance models:

- If the appliance has a dedicated Management port, select **Dedicated**.
- If the appliance does not have a dedicated Management port, select **Shared**.

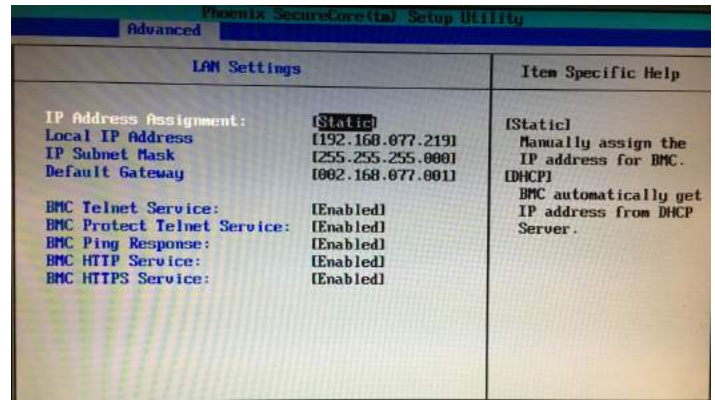
Once configured, click on **LAN Settings**.



**STEP 4**

Select whether to assign a static IP or through DHCP. Enter the network information where required.

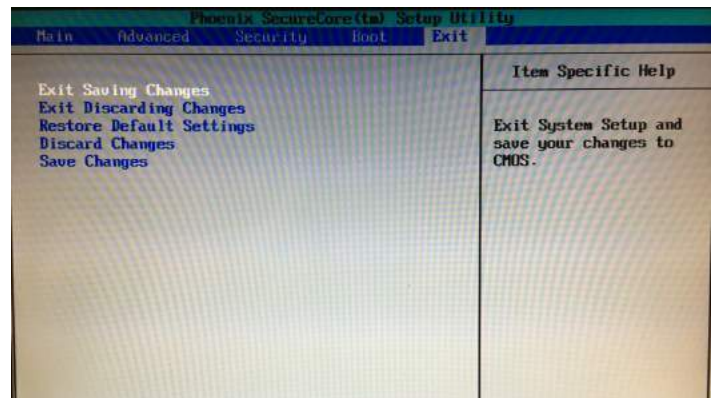
- If the the user has selected **Dedicated** in *Step 4*, a DHCP or static IP address can be assigned.
- If the the user has selected **Shared** in *Step 4*, Axcient recommends assigning a Static IP address.



**STEP 6**

Click **Esc** until the *LAN Setting* screen appears. Navigate to the Exit page and select **Exit Saving Changes** to save the iLO configuration. The machine will reboot and the iLO feature will be operational.

The user can ping the iLO IP address to confirm success configuration.



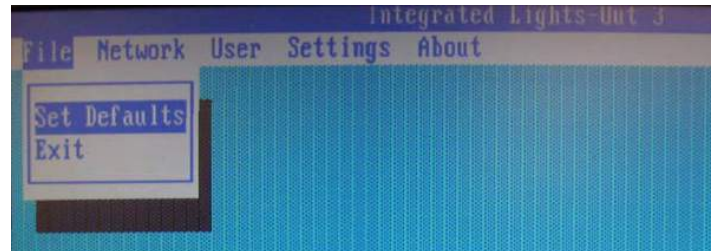
# G7 and G8 Appliance iLO Configuration

These instructions are designed for the iLO 3 (G7 appliance) and iLO 4 (G8 appliance) configuration. Configuring the iLO is the same process for both models of Axcient appliances.

During the boot process, the user will need to press the **F2** key. Shortly after, the user will be prompted to press the **F8** key with the message "Hit F8 to continue to iLO configuration". There user will have a short window to press both keys. If the user is unable to press both keys, simply reboot the appliance and try again.

## STEP 1

In the *Integrated Lights Out* screen, navigate to the *File* tab and select **Set Defaults** to reset the iLO values to system defaults.



## STEP 2

Navigate to the *Network* tab and do one of the following:

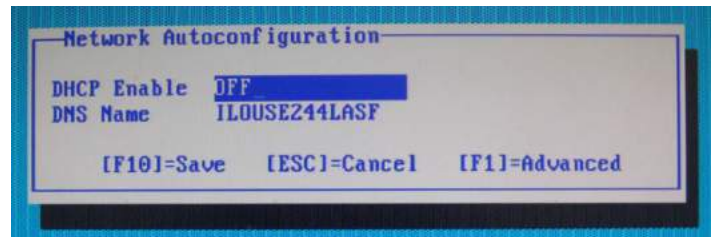
- To use DHCP, skip to Step 6.
- To use a static IP address (recommended), select **DNS/DHCP**.



## STEP 3

The *Network Autoconfiguration* screen will appear. DHCP is enabled by default.

Disable it by setting the *DHCP Enable* field to **OFF**. Press the **F10** key to save.



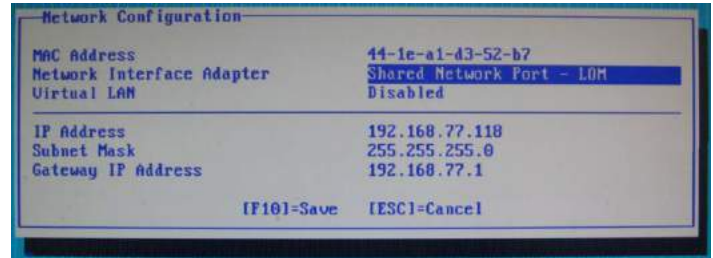


**STEP 4 (Static)**

In the *Network* tab screen select **NIC and TCP/IP** to bring up the *Network Configuration* screen in order to configure the network settings.

Make changes in the following fields:

- *Network Interface Adapter* - Select **Shared Network Port**.
- *IP Address* - Enter the static IP address for the iLO.
- *Subnet Mask* - Enter the subnet mask value.
- *Gateway IP Address* - Enter the gateway IP address.

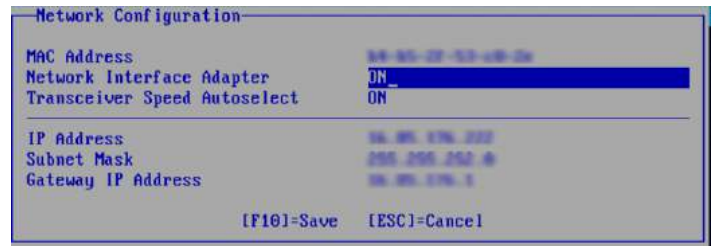


**STEP 4 (DHCP)**

In the *Network* tab screen select **NIC and TCP/IP** to bring up the *Network Configuration* screen in order to configure the network settings.

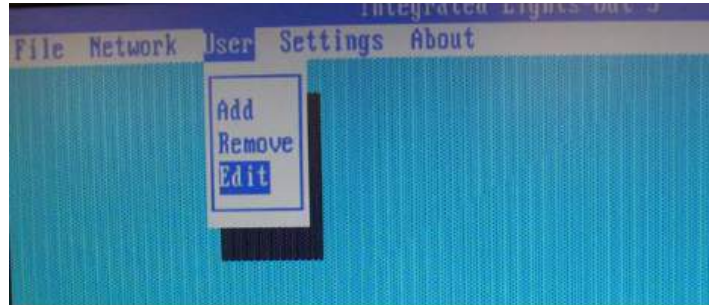
Make changes in the following fields:

- *Network Interface Adapter* - Select **On**. If a dedicated Management port is not present, select **Shared Network Port**.
- *IP Address* - Will be auto-populated.
- *Subnet Mask* - Will be auto-populated.
- *Gateway IP Address* - Will be auto-populated.



STEP 5

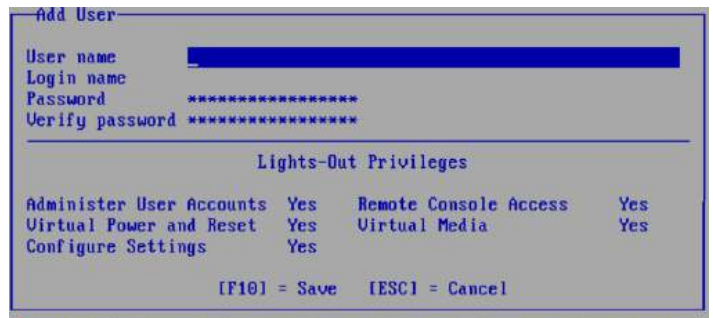
Navigate to the **Users** tab. Here new user accounts can be added, removed and edited.



STEP 5a: Add User

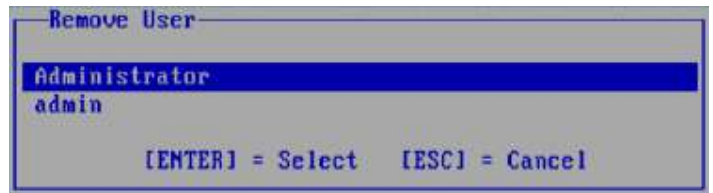
New users can be added at any time. The password, along with the user privileges can be initially configured here.

Press **F10** to save any changes.



STEP 5b: Remove User

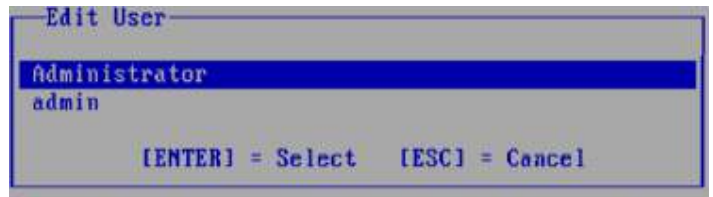
Existing users can be removed at any time. Highlight the desired user and click **Enter** to delete.



STEP 5c: Edit User

Existing users can be edited at any time. Highlight the desired user and click **Enter** to begin editing the user account.

Click **F10** to save any edits.



# G9 Appliance iLO Configuration

These instructions are designed for the iLO 4 for the G9 appliance configuration. Configuring the iLO is the same process for all G9 form factors (tower, 1U and 2U).

The user will need to connect a monitor using a VGA cable and a keyboard to the appliance. This is required in order to navigate the BIOS and configure the iLO.

**The iLO port is shared with the Eth0 Ethernet port on the physical appliance.**

Once the user has finished configuring and saved the iLO network settings and user accounts, the appliance will need to be rebooted in order for the changes to be applied.

## Configure Network Settings

### STEP 1

During the initial machine initialization process, the user will need to press the **F9** key to enter the *System Utilities* configuration screen.

The user will have until the progress bar at the top of the screen has been filled to press **F9**.



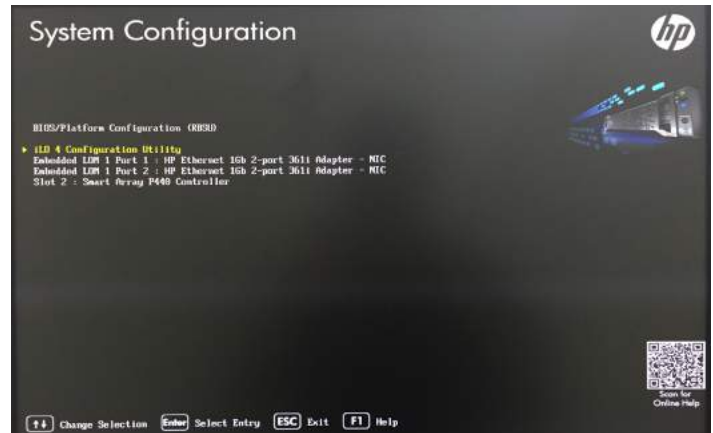
### STEP 2

In the *System Utilities* screen, select the **System Configuration** option and press **Enter**.



**STEP 3**

Next, select the **iLO 4 Configuration Utility** option and press **Enter**.



**STEP 4**

The user is now in the *iLO 4 Configuration Utility* screen where the user can configure the iLO network settings, and the User accounts which can access the iLO feature.

To configure the network settings, select the **Network Options** option and press **Enter**.



**STEP 5**

Configure the iLO network settings as required. The user will need to do the following:

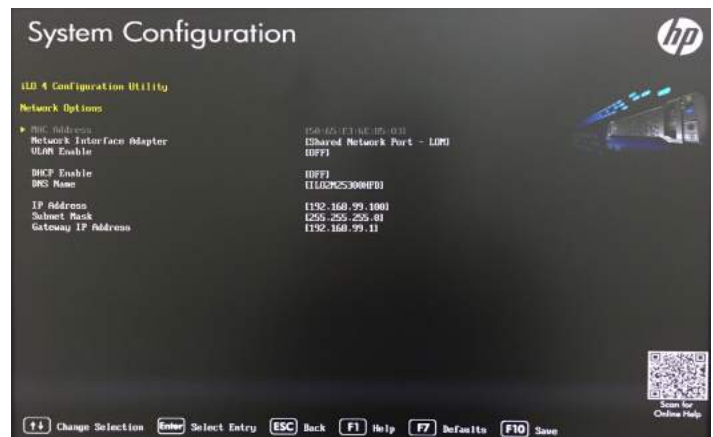
- Confirm that the *Network Interface Adapter* option is set to **Shared Network Port - LOM**.
- Axcient strongly recommends to set the *DHCP Enable* option to **OFF**.

If DHCP is enabled, a new IP will be assigned each time the appliance reboots or is otherwise turned off and back on.

- Configure the *IP Address*, *Subnet Mask* and *Gateway IP Address*.

Press **F10** to save the configuration changes.

The appliance will need to be rebooted in order for the changes to be applied.



## Configure User Credentials

### STEP 1

In the *iLO Configuration Utility* screen, select the **User Management** option and press **Enter**.



### STEP 2

The user will be taken to the *User Management* screen.

The user has two options:

- **Add User**
- **Edit/Remove User**



### STEP 3a - Add New User

Click the **Add User** option to create a new iLO user account. Configure the user permissions, as well as:

- **Username** - The name of the user when listed in the *iLO Configuration Utility*.
- **Login Name** - The actual user log in name named when issuing iLO commands.
- **Password** - The password used to issue iLO commands.

Click **F10** to finish creating the new user account.

The appliance will need to be rebooted in order for the changes to be applied.



**STEP 3b - Edit/Remove User**

To edit or remove a user, select the **Action** option listed under the target user and select the desired option:

- **No Change**- Exit the *Action* selection screen.
- **Delete** - Remove an existing iLO user account.
- **Edit** - Modify an existing iLO user account.

Press **F10** to commit any changes to existing iLO user accounts.

The appliance will need to be rebooted in order for the changes to be applied.



# Appliance Management Ports

The following pictures identify the location of the iLO management ports on the G6, G7 and G8 appliances across all form factors.

When available, use the dedicated Management port when using and configuring the iLO. The dedicated Management port is labeled **Mgmt**. When configuring the iLO, make sure to set the NIC adapter to **Dedicated**.

If a dedicated Management port is not available, use the primary Ethernet Port 1 for iLO. When configuring the iLO, make sure to set the NIC adapter to **Shared**.

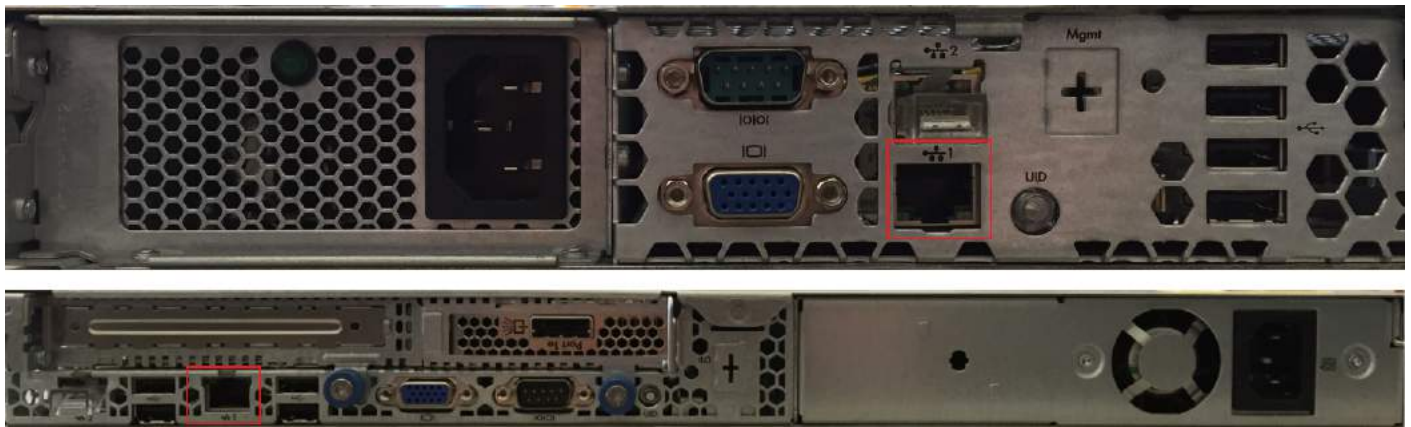
## Tower Appliance

G7 and G8 appliances.



## 1U Appliance

G7 and G8 appliances.



## 2U Appliance

G6 and G8 appliances.

