



Axcient

# Replibit Pro Appliance IPMI Interface Quickstart Guide

The purpose of this guide is to provide you with a high-level overview of the most commonly used functions in the Intelligent Platform Management Interface (IPMI) for the Axcient Replibit Pro BDR Appliance.

The IPMI interface allows system administrators and other authorized users to access their system remotely, control the power of their system, redirect the console, utilize a remote graphics console display, monitor system health and configure additional settings.

The IPMI interface provides remote access to multiple users at different locations for ease in troubleshooting, diagnostics, networking, and other maintenance activities.

When ordering your appliance, you will specify your network information for this IPMI feature; therefore, it will arrive preconfigured with your IP address when it is shipped to you.

This Axcient Replibit BDR IPMI Interface Quickstart Guide will cover the following common tasks for the Pro Appliance:

- A. [Access the IPMI Interface](#)
- B. [Log in to the IPMI Interface](#)
- C. [MANDATORY: Change the initial default password](#)
- D. [Remote control the power state of your system](#)
- E. [Redirect the Console](#)
- F. [Utilize the Remote \(graphics\) Console Display feature of the IPMI Interface](#) G. [Check the health of your server](#)
- H. [Troubleshoot](#)
- I. [Monitor your server using SNMP](#)
- J. [Change your network settings/IP Address](#)
- K. [Setting the IPMI Address from the System BIOS](#)

## Customer Support

At Axcient, we want to help you quickly resolve your technical issues and value your input to build products that incorporate your suggestions!

If you need assistance with set-up or any other technical questions or issues, please contact our Technical Support team at [replibitsupport@Axcient.net](mailto:replibitsupport@Axcient.net) or call:

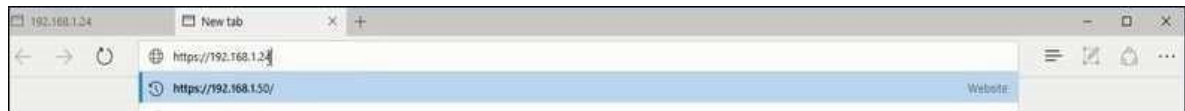
- 678-888-0700, and select 2 for technical support, then 1 for backup services support, which includes Axcient Replibit.

For information on more detailed topics not covered in this Axcient Replibit BDR IPMI Interface Quickstart Guide for the Pro Appliance, please access the manufacturer's User's Guide (Revision 2.3b) using the following link:

[http://supermicro.com/manuals/other/SMT\\_IPMI\\_Manual.pdf](http://supermicro.com/manuals/other/SMT_IPMI_Manual.pdf)

## A. Access the IPMI Interface for the Axcient Replibit BDR Pro Appliance

1. Ensure that the dedicated IPMI network port is plugged into your switch, and has connectivity.
2. Begin by opening a browser window.
3. Type the following in the address bar as shown below:  
https:// <followed by the IP address that was assigned to the IPMI interface>.



### Notes:

- The IPMI interface will operate with any Web Browser that supports Java.
- Please do not use the https address shown above in the example; this is for illustrative purposes only, and you will need to use your unique (preconfigured) IP address that you provided for your IPMI Interface.
- You must have **Java** installed and enabled for the IPMI interface to operate.

Additionally, you can refer to [Section K: Setting the IPMI Address from the System BIOS](#) in this Guide.

If you still do not know the IPMI address assigned to your BDR unit, please contact Axcient Technical Support at [replibitsupport@Axcient.net](mailto:replibitsupport@Axcient.net) or call: 678-888-0700; select 2 for Technical Support, and then 1 for Backup Services Support, which includes Axcient Replibit.

4. If your browser prompts you with the dialog box security certificate shown to the right, click Continue to this webpage (not recommended).

## B. Login to the IPMI Interface for the Axcient Replibit BDR Pro Appliance

The IPMI Interface will come preconfigured with a default password, which is listed on the device case label. You can use this password to log in for the first time; **however, it will be imperative to change this immediately, which you will learn how to do in this guide.**

1. The Login Window appears after clicking Continue to this webpage.



2. In the Username field, enter ADMIN.
3. In the Password field, enter the password listed on the device case.

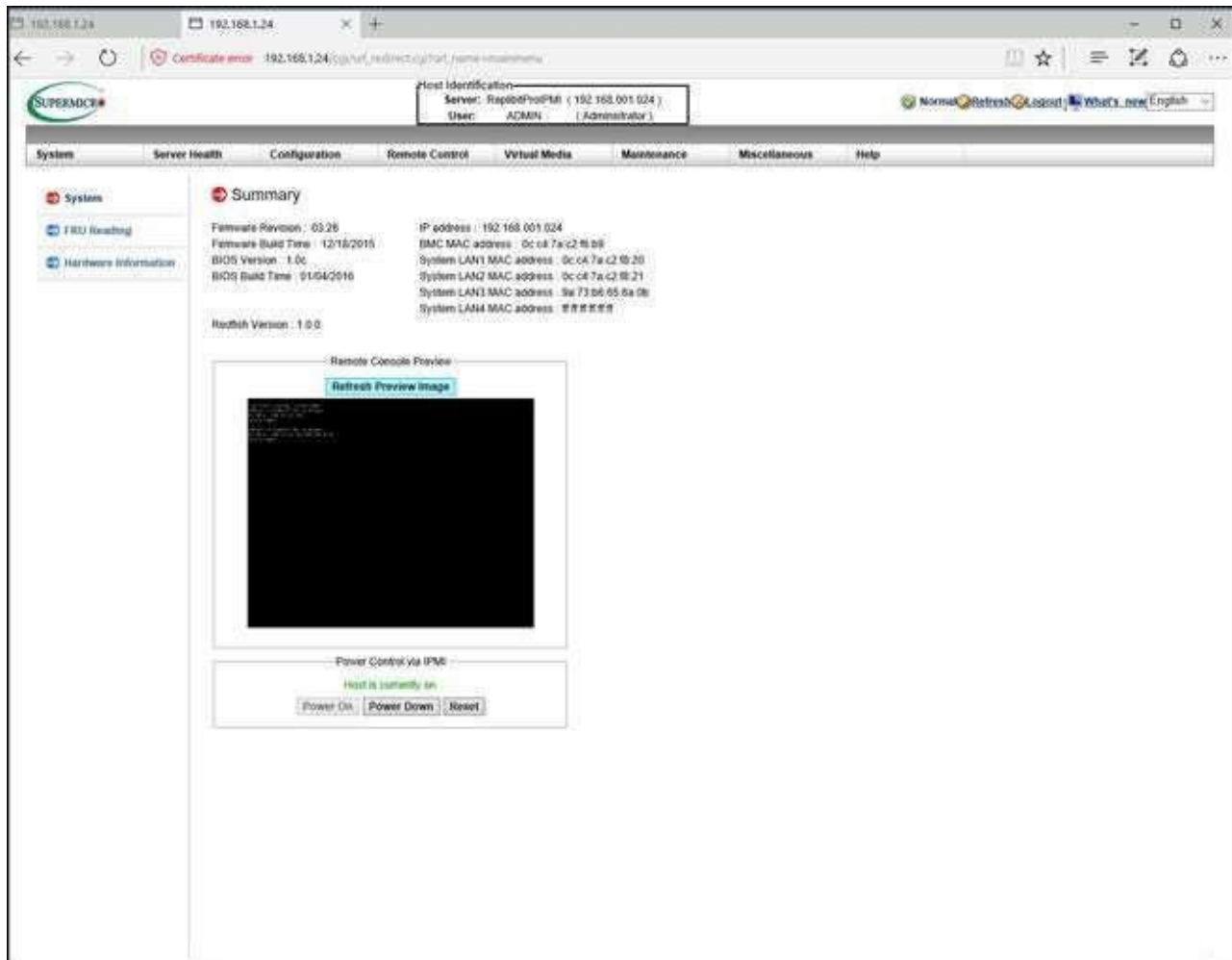
**Notes:**

- Please use all UPPERCASE letters for this initial login.
  - **IMPORTANT!** As mentioned, this device comes preconfigured with an ADMIN Username and Password; it is **critical** that you change this default password to a unique one of your own **immediately after logging in for the first time with the default credentials** which you will do in the next section.
4. Select the login button.



The IPMI Interface Main Menu appears.





### C. MANDATORY: Change the initial default password for the Axcient ReplibitBDR Pro Appliance IPMI Interface

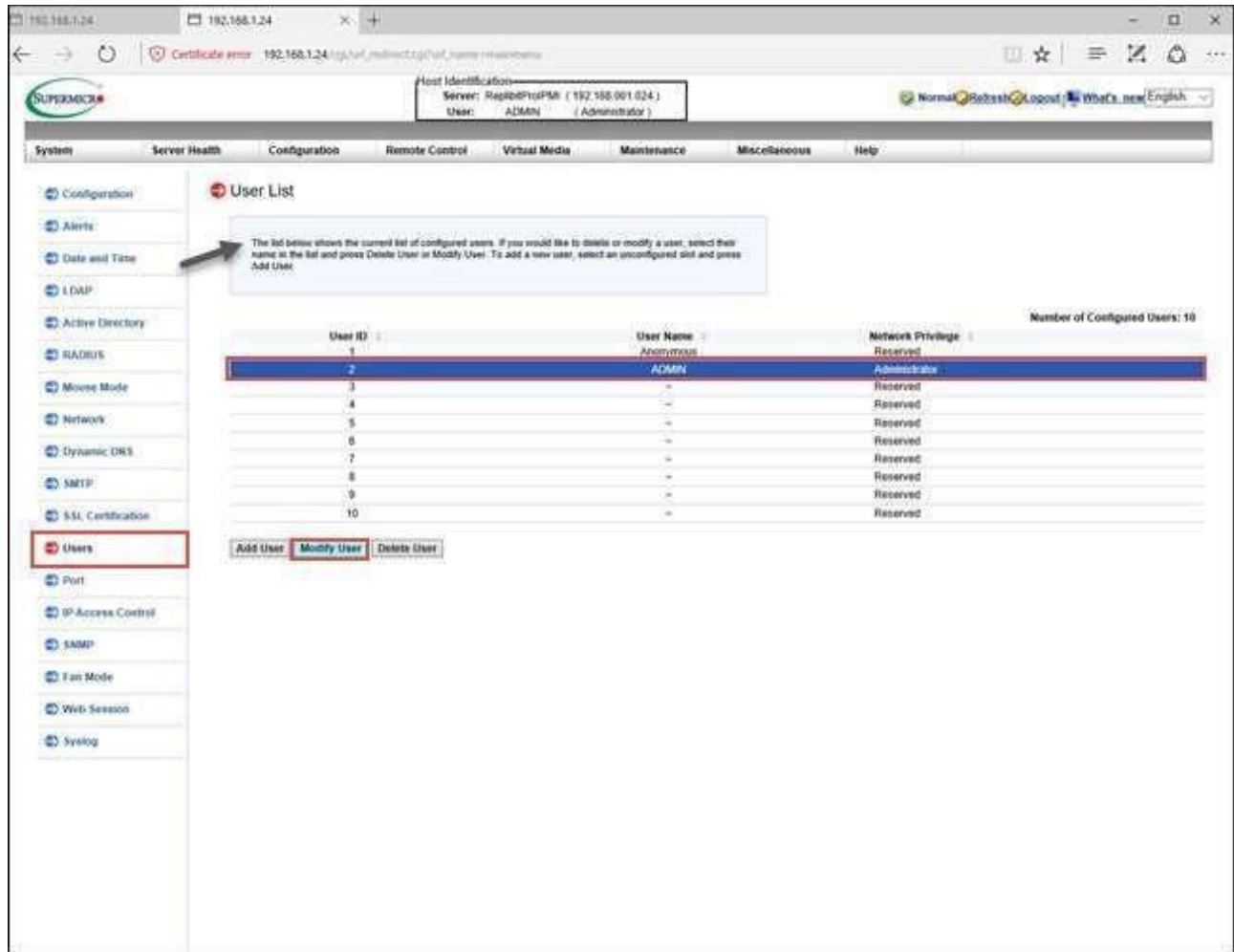
**Note:** Changing the default AMIN password is a MANDATORY step that must be done during your initial set-up process.

1. From the IPMI Main Menu, click the Configuration drop-down menu and select Users.





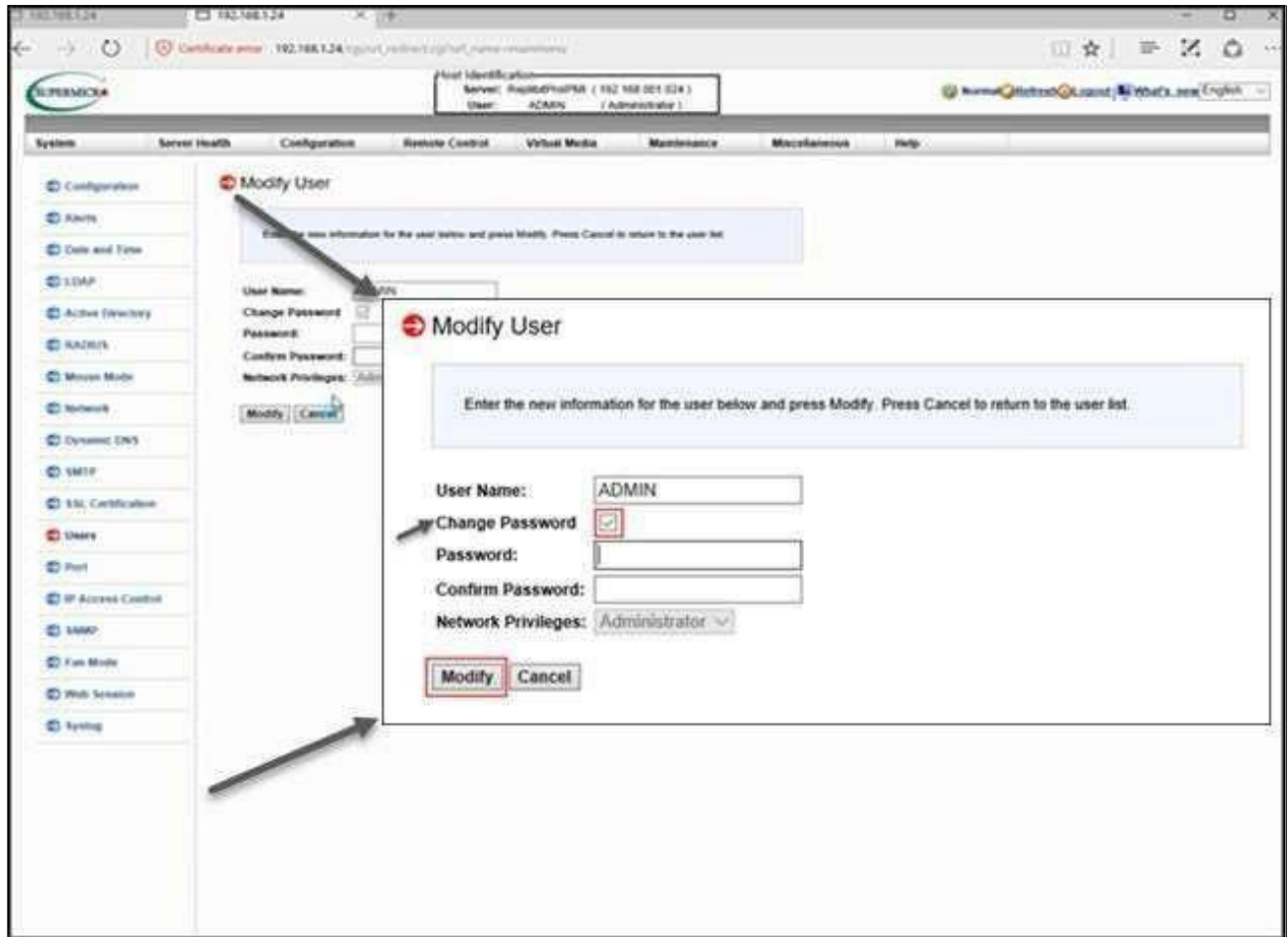
- pg. 7



The Modify User screen appears.

4. In the Change Password field, check the Change Password checkbox.
5. In the Password field, enter a unique password that you create (it is recommended to choose a strong password with Upper, Lower, and Numeric characters).
6. In the Confirm Password field, type in the password that you just created.
7. Click on the Modify button.





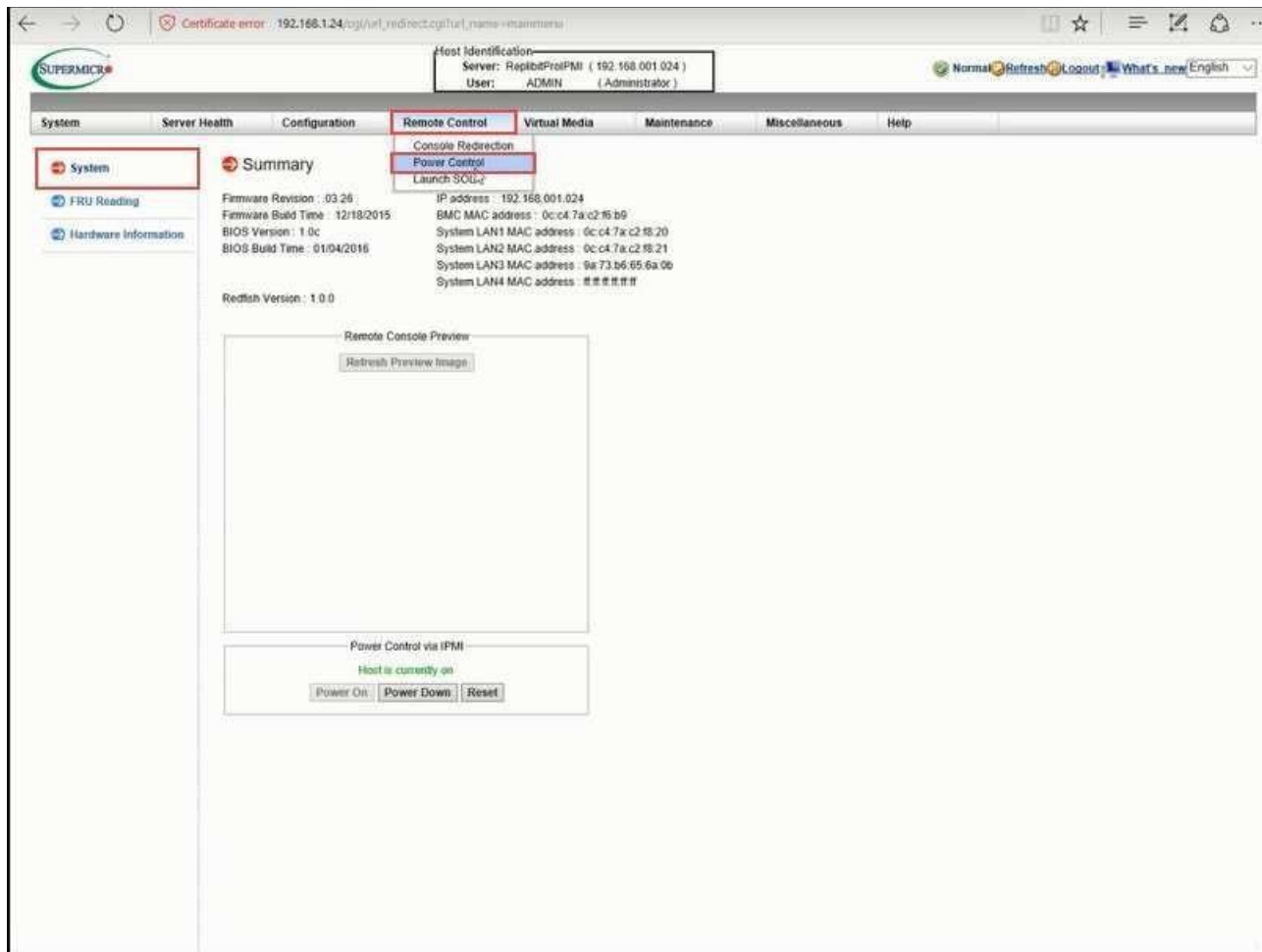
**Note:** As mentioned, changing the default ADMIN Username and Password to a unique set of credentials of your own is a **MANDATORY** step. Please ensure that this Step C described above is completed prior to proceeding to Step D.

#### D. Remote control the power state of your system

After you modify your password, the System screen appears.

To control the power of your system remotely:

1. Click the Remote Control drop-down menu.
2. Select Power Control.

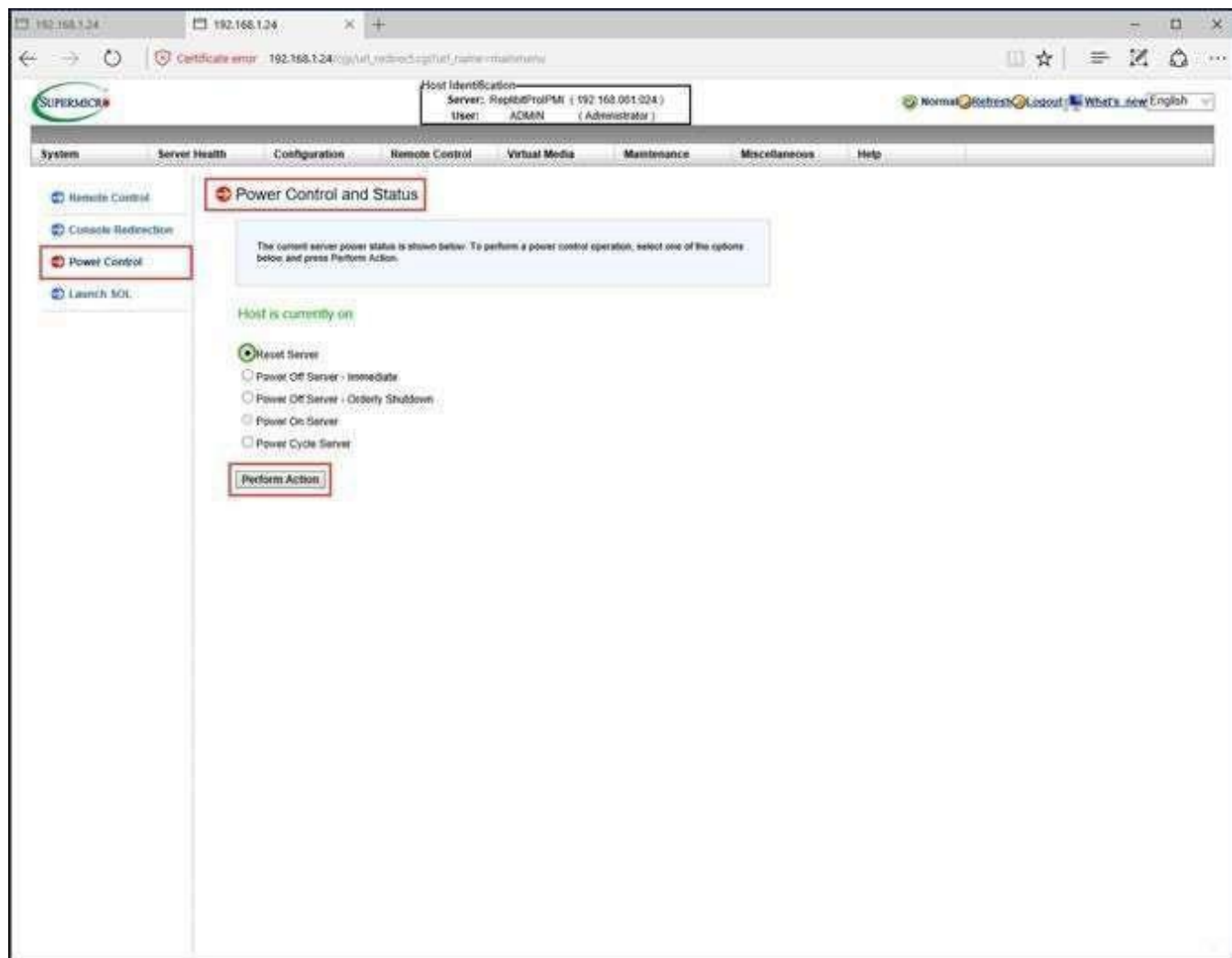


The Power Control and Status screen appears.

From the Power Control and Status screen, you can perform several actions such as:

- Reset Server (hard reboot),
- Power Off Server Immediate,
- Power Off Server Orderly Shutdown ("gracefully" power off),
- Power On Server, and
- Power Cycle Server (Power Off then Power On server).

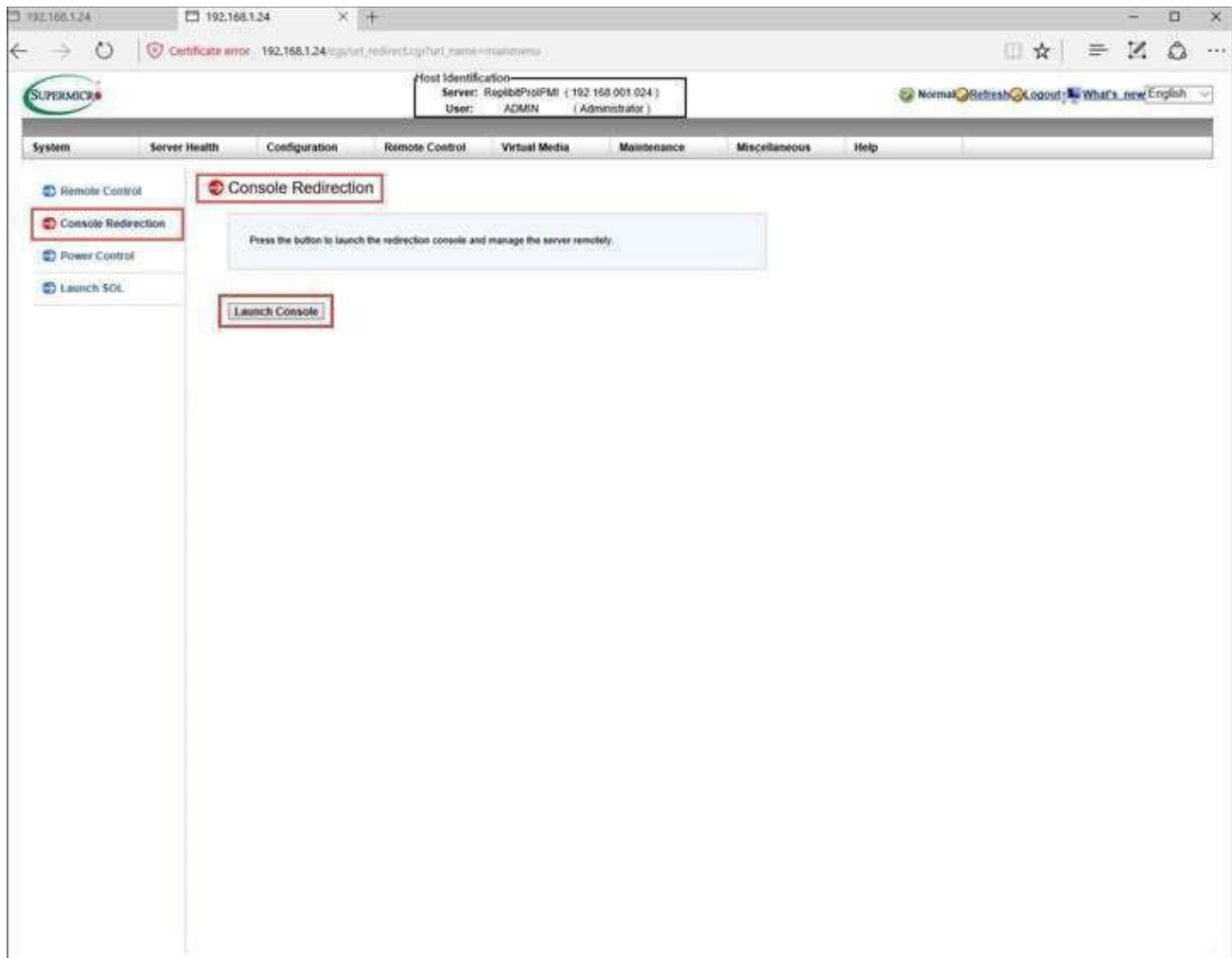
1. Click the radio button of your desired action such as Reset Server, Power Off Server Immediate, and so forth.
2. Then click the Perform Action button.



## E. Redirect the Console

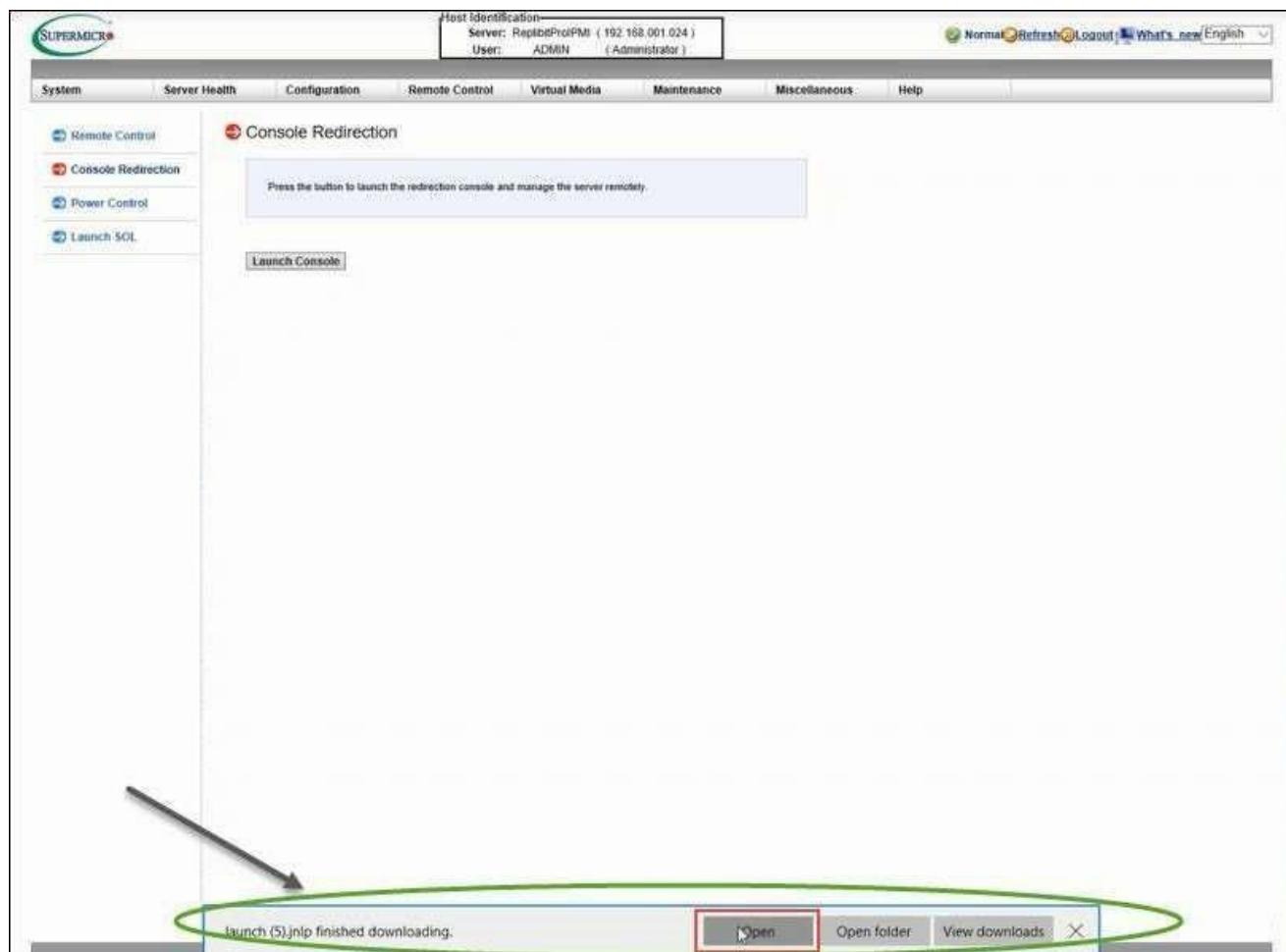
To redirect your console/graphics display:

1. Click on the Console Redirection menu option.
2. Click the Launch Console button.



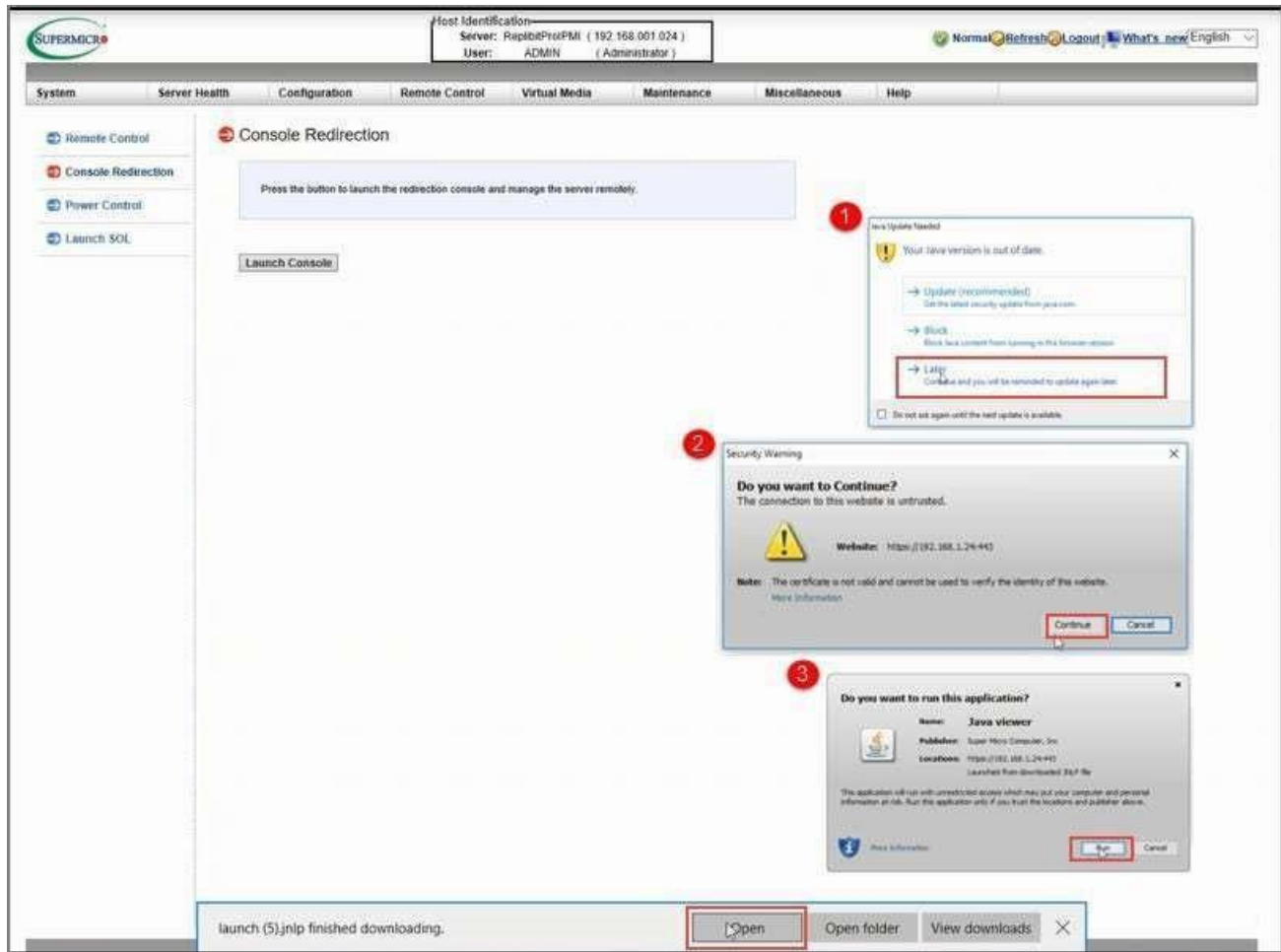
After clicking the Launch Console button, a dialog box prompt appears at the bottom of the Console Redirection screen stating, launch.jnlp finished downloading.

At this prompt, click the Open button.



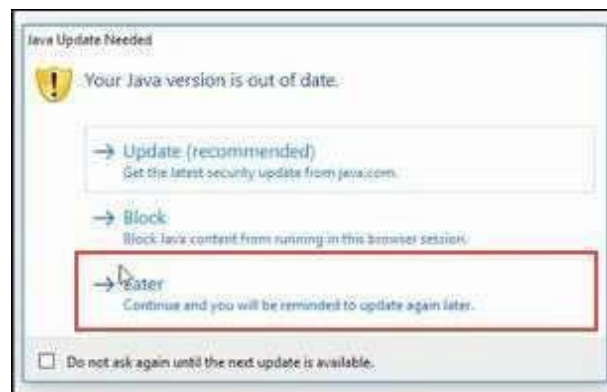
After clicking the Open button, you may receive three dialog boxes shown below from the Console Redirection screen:





Perform the following actions for each:

1. If you receive a Java Updated Needed dialog box, you can click "Later" at your discretion.  
(**Note:** In order to run the IPMI interface you do need Java installed, however, you can choose to perform a Java update at a later time).



2. At the Do you want to Continue? dialog box, click the Continue button.



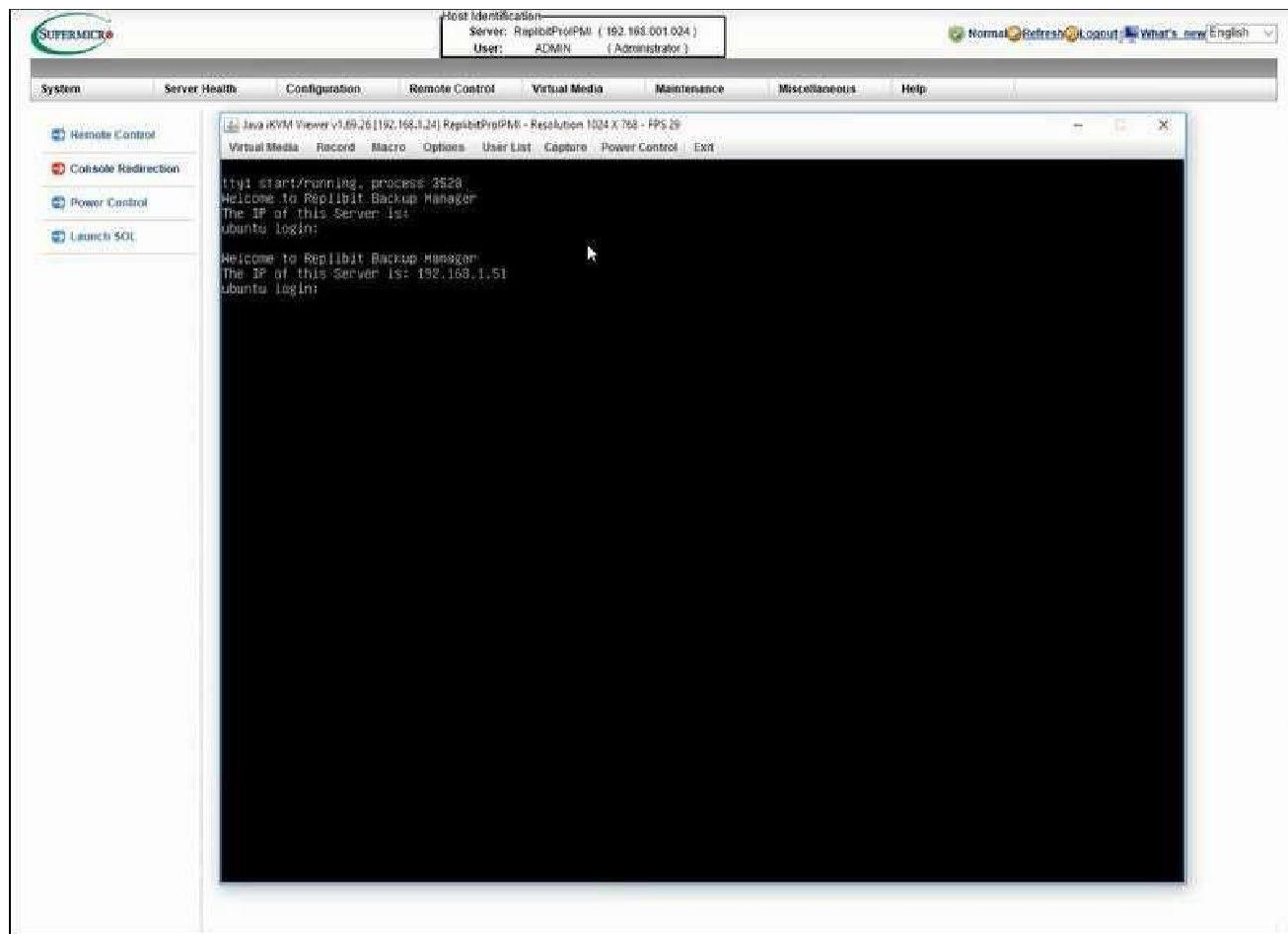


3. At the Do you want to run this application? dialog box, click the Run button.



## F. Utilize the Remote (graphics) Console Display feature of the IPMI Interface

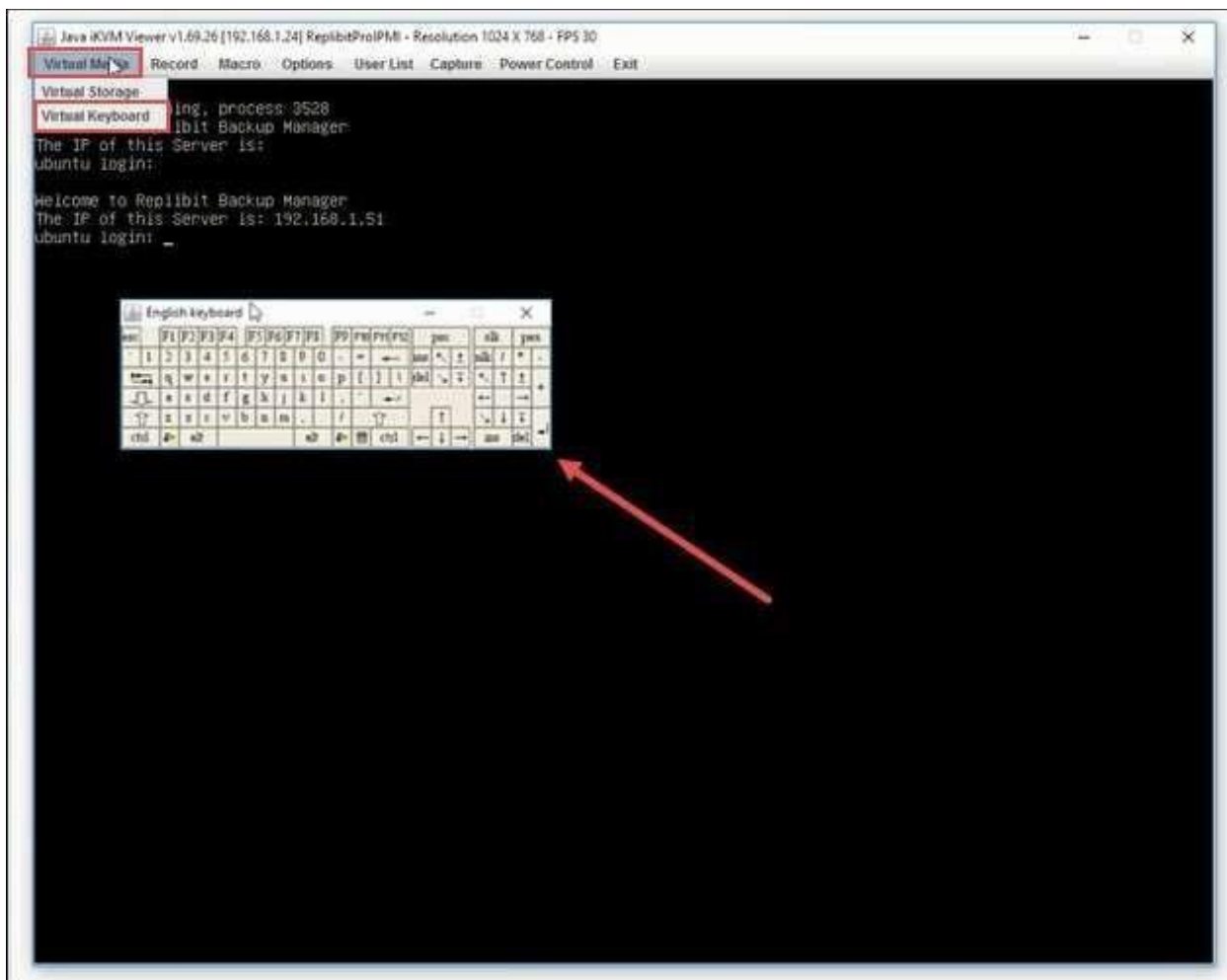
Now that you have redirected your Console, launched the Console button, and followed the dialog boxes to run Java viewer, the Graphics Display screen of your console appears.



From this graphics display screen, you can perform several actions such as using a Virtual Keyboard.

To enable this feature:

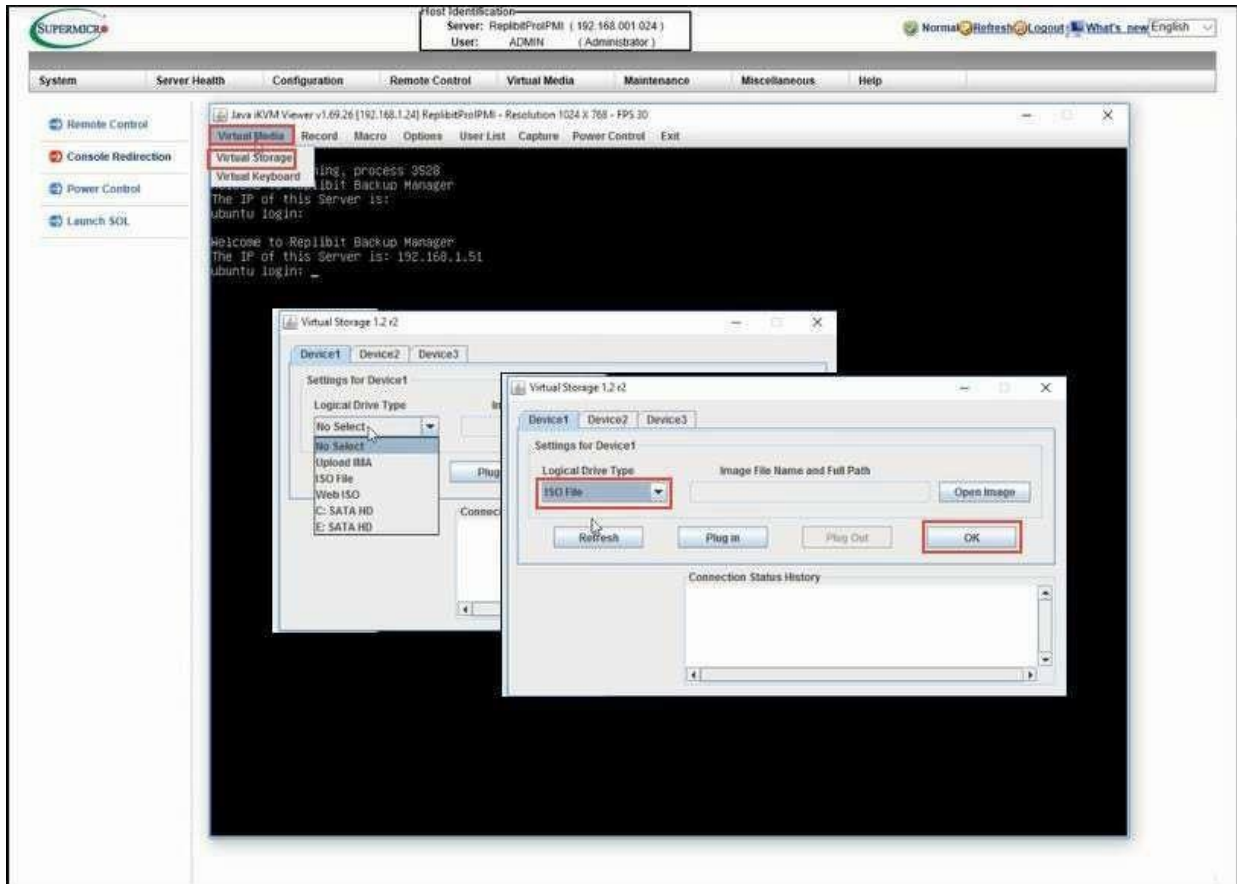
1. Click on the Virtual Media drop-down menu.
2. Select Virtual Keyboard.  
Note: Certain keys (like Function keys) can only be sent to the remote system using the Virtual Keyboard



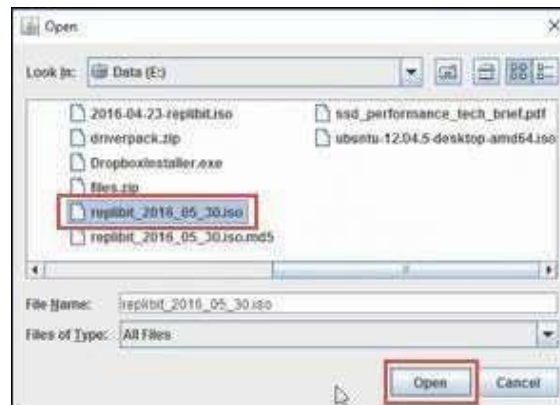
From the graphics display screen, you can also enable Virtual Storage as in a virtual CD ROM drive.

To enable this feature:

1. Click on the Virtual Media drop-down menu.
  2. Select Virtual Storage.
  3. From the Virtual Storage window, click on your desired drive.
- For example, if you want to reinstall Replibit, select ISO file from the Logical Drive Type drop-down menu to plug in a virtual CD ROM drive, and then click the OK button.



- From the Open window, choose your replibit.iso and click on the Open button.

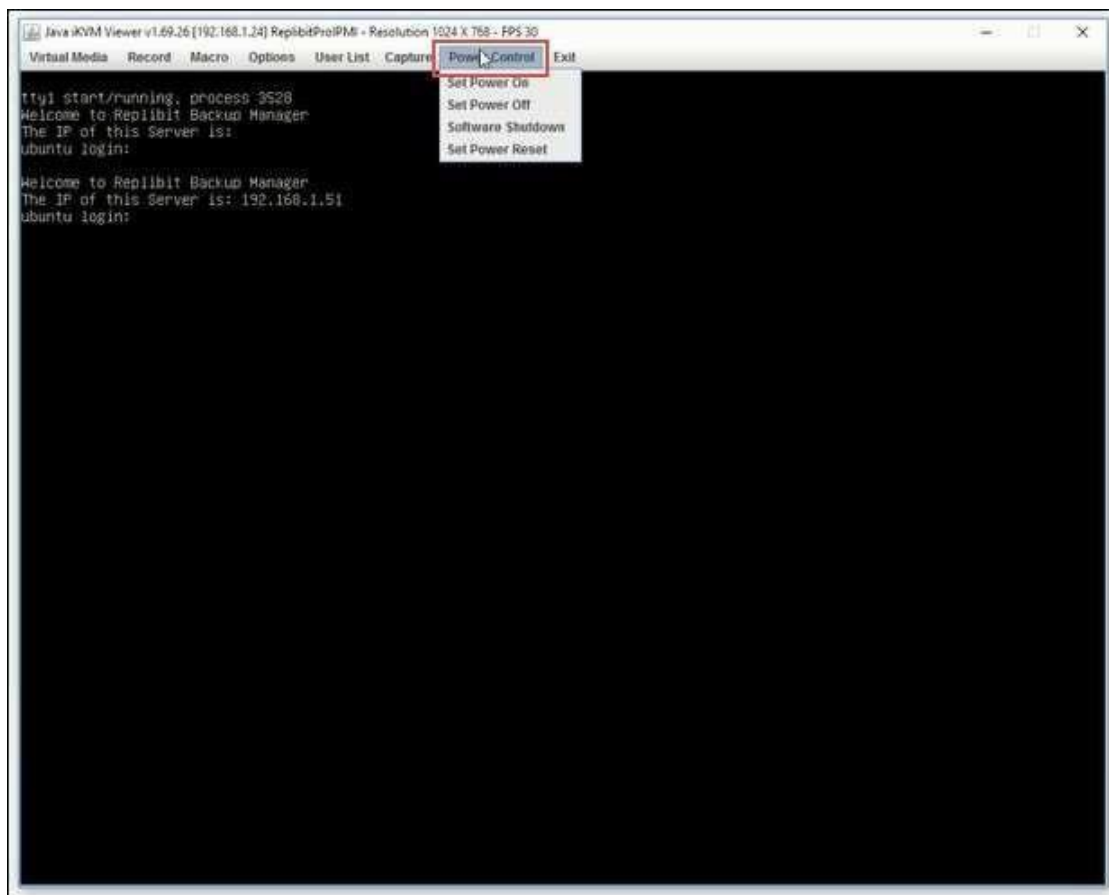


- Then select the Plug In button which will plug in your virtual CD ROM drive.
- When you reboot your machine, you can choose to boot off the virtual CD ROM drive to reinstall Replibit from the .iso file.

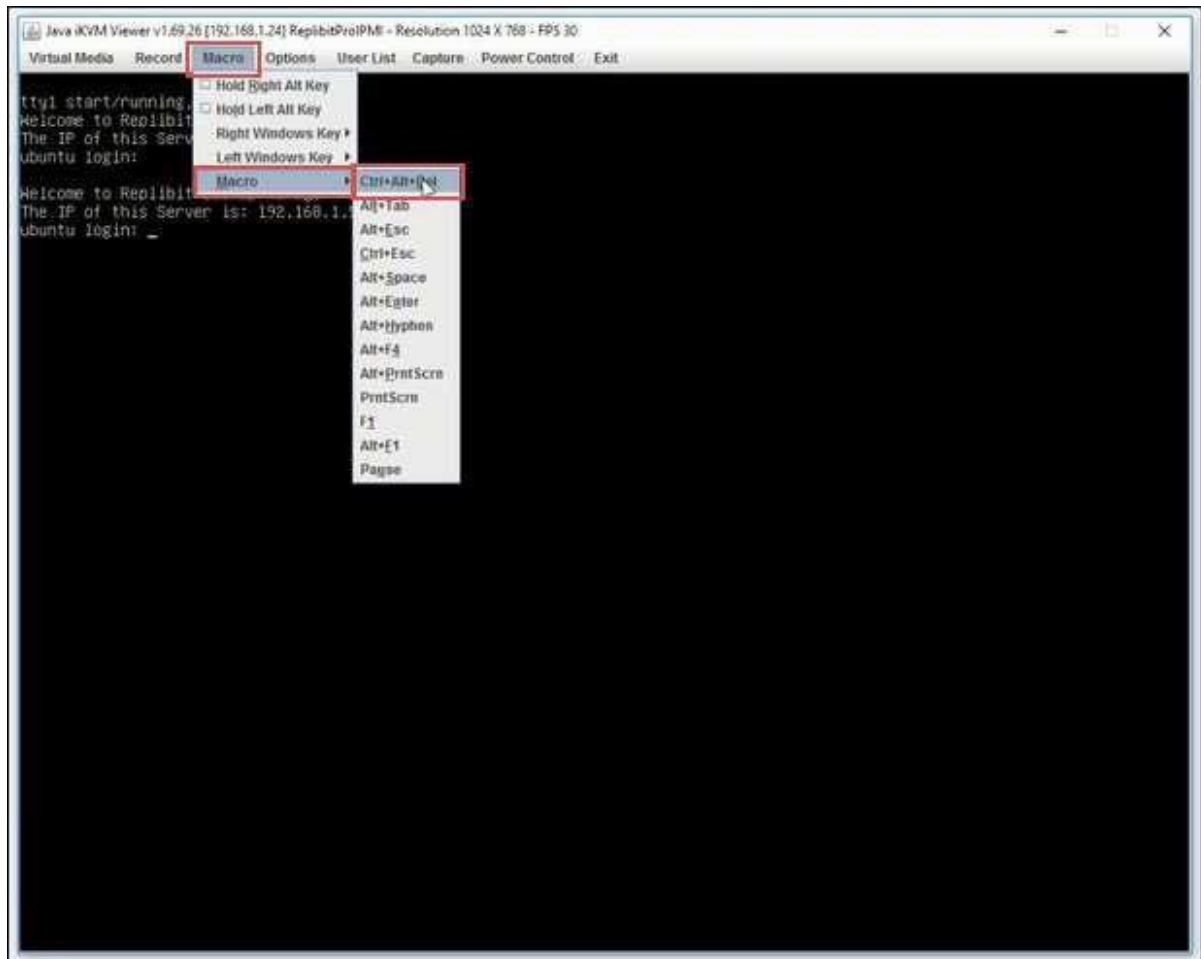


Other common functions from the virtual console graphics display include:

- Power Control: by selecting the Power Control drop-down menu, you can Set Power On, Set Power Off, Software Shutdown, and Set Power Reset.



- Additionally, you can utilize Macro options from the virtual console, such as Ctrl+Alt+Del (for example, select Macro, Macro, and then Ctrl+Alt+Del from the drop-down menu).

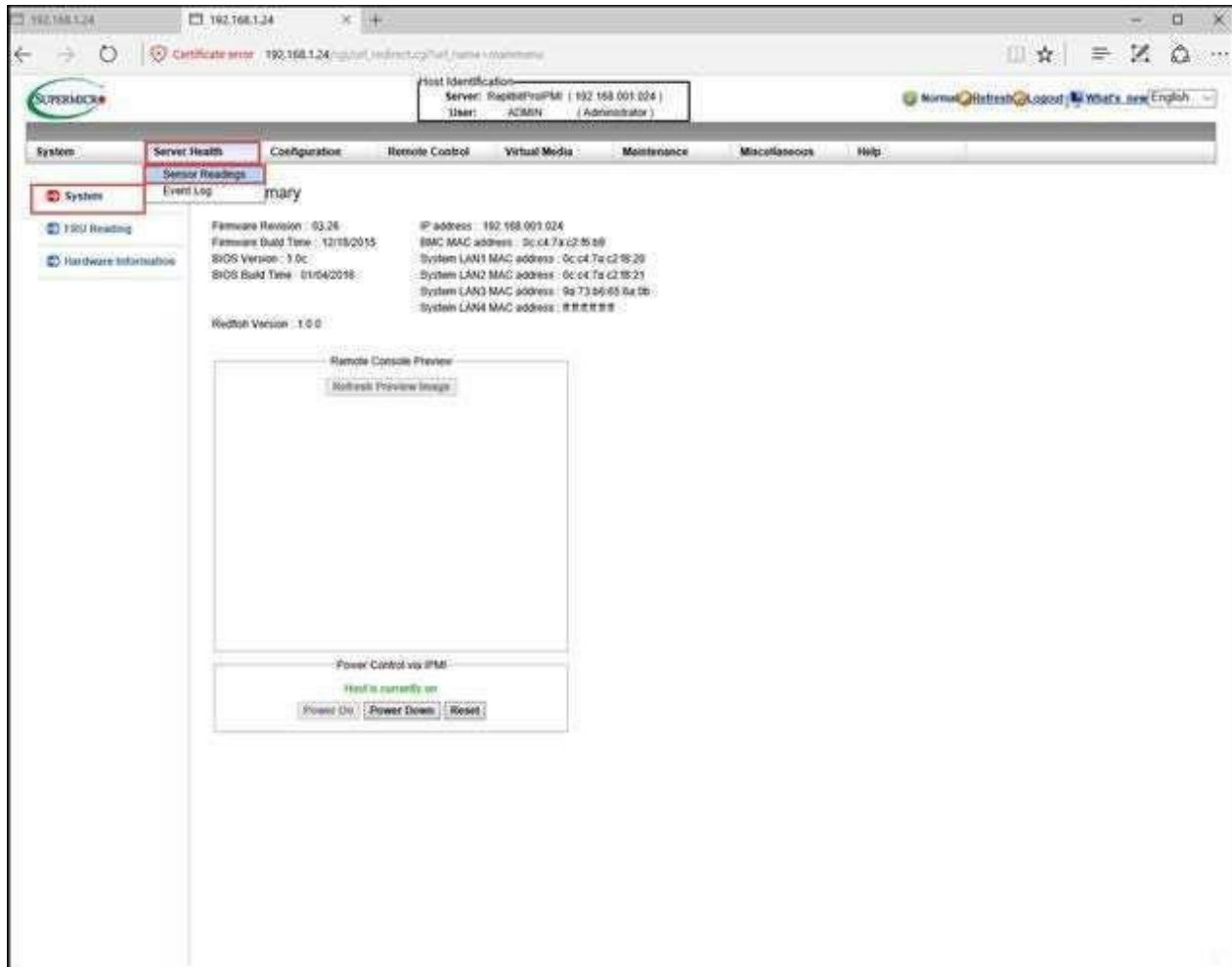


## G. Check the health of your server

To check the health of your server remotely:

1. From the System menu, click on Server Health.
2. Then click on Sensor Readings.

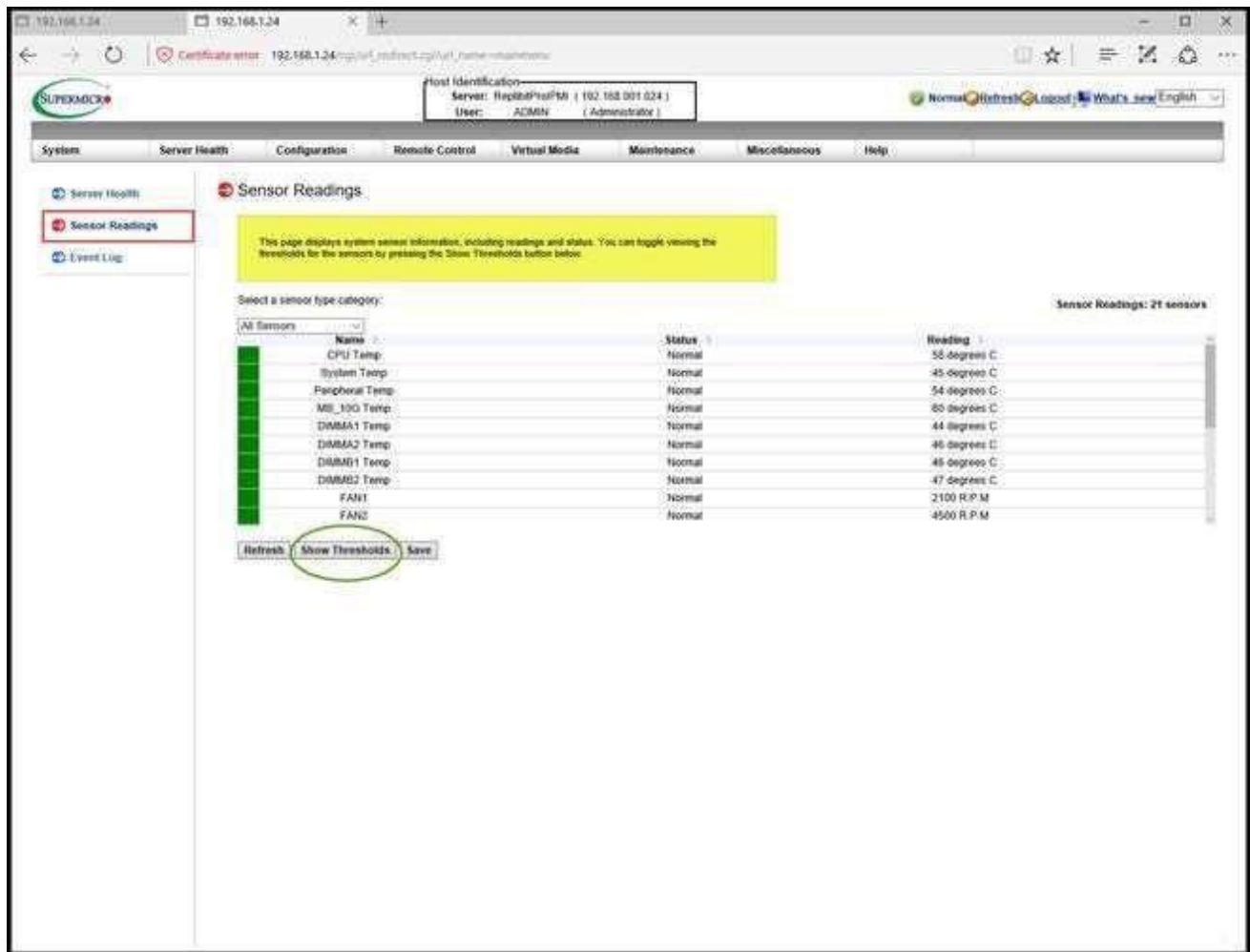




The Sensor Readings screen appears.

This screen will show you in green or in red, the state of each of the sensors. For example, these may include the CPU Temperature, the RAM temperature, the Fan Speed (if the fans are healthy), and the Voltage indicator.

The Sensor Readings feature of the IPMI is helpful to troubleshoot and diagnose if your system is not functioning properly.



## H. Troubleshoot

An additional troubleshooting feature is to check the Event Log for any unusual events or errors. Scroll through all of the events, and read each corresponding description for any issues.

Host Identification:  
Server: ReplibitProIPMI ( 192.168.0.01.024 )  
User: ADMIN ( Administrator )

Normal Refresh Logout What's new English

System Server Health Configuration Remote Control Virtual Media Maintenance Miscellaneous Help

Server Health Sensor Readings **Event Log**

For more special event log settings, please click [here](#)

Below is a table of the events from the system's event log. You can choose a category from the pull-down box to filter the events, and also sort them by clicking on a column header.

Select an event log category: **All Events**

Event Log: Max= 512, Used= 130 (event entries)

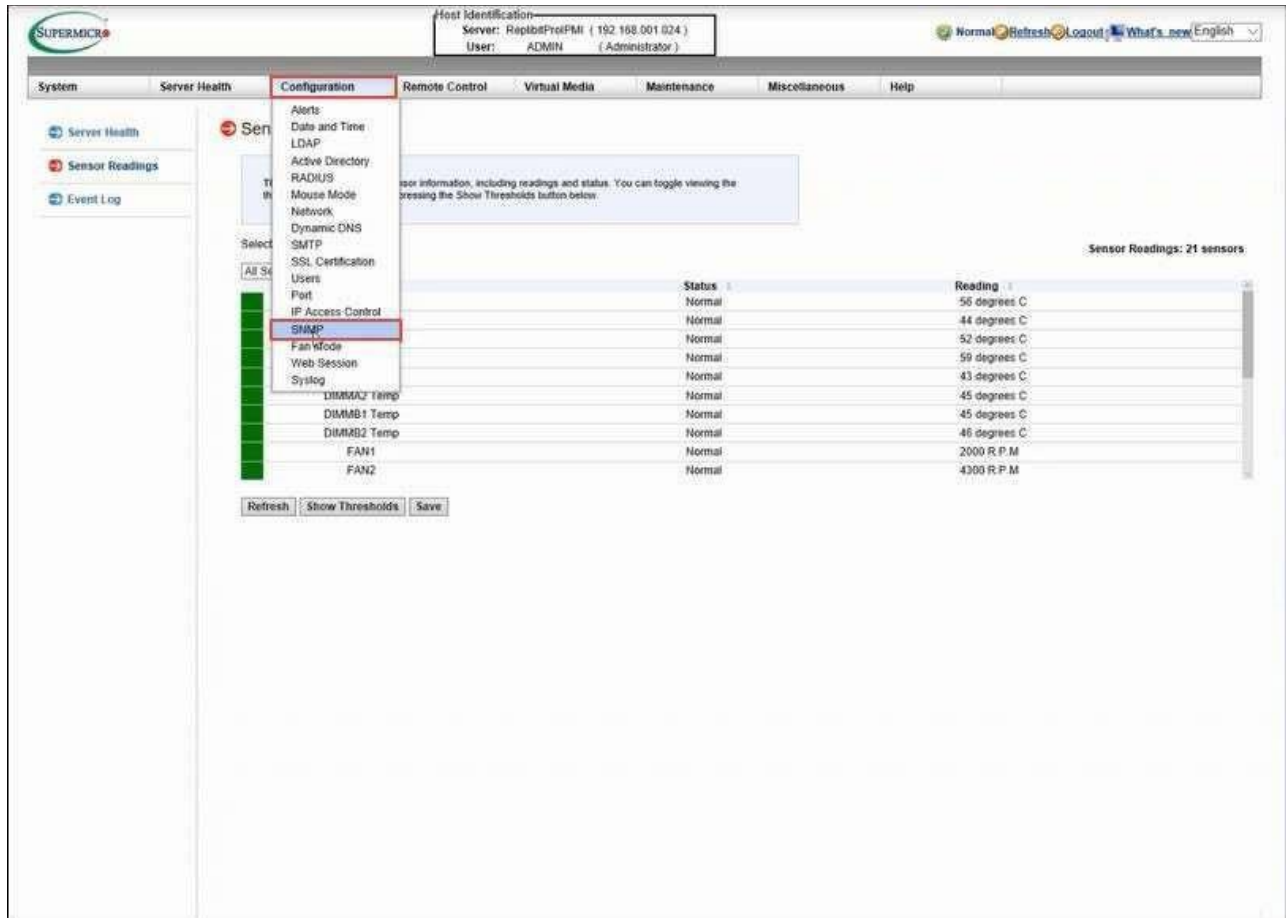
Event ID	Time Stamp	Sensor Name	Sensor Type	Description
1	2016/03/29 14:50:07	CPU Temp	Processor	Thermal Trip - Assertion
2	2016/03/08 00:12:18	BIOS POST Progress #0x00	BIOS POST Progress	Error-Unrecoverable video controller failure - Assertion
3	2016/03/08 00:15:48	BIOS POST Progress #0x00	BIOS POST Progress	Error-Unrecoverable video controller failure - Assertion
4	2016/03/08 00:20:29	BIOS POST Progress #0x00	BIOS POST Progress	Error-Unrecoverable video controller failure - Assertion
5	2016/03/08 00:22:29	BIOS POST Progress #0x00	BIOS POST Progress	Error-Unrecoverable video controller failure - Assertion
6	2016/03/27 01:10:22	FAN1	Fan	Lower Critical - Going Low - Assertion
7	2016/03/27 01:10:22	FAN1	Fan	Lower Non-Recoverable - Going Low - Assertion
8	2016/03/27 01:10:26	FAN1	Fan	Lower Non-Recoverable - Going Low - De-assertion
9	2016/03/27 01:10:26	FAN1	Fan	Lower Critical - Going Low - De-assertion
10	2016/03/27 01:10:33	FAN1	Fan	Lower Critical - Going Low - Assertion

Clear Event Log Save

## I. Monitor your server using SNMP

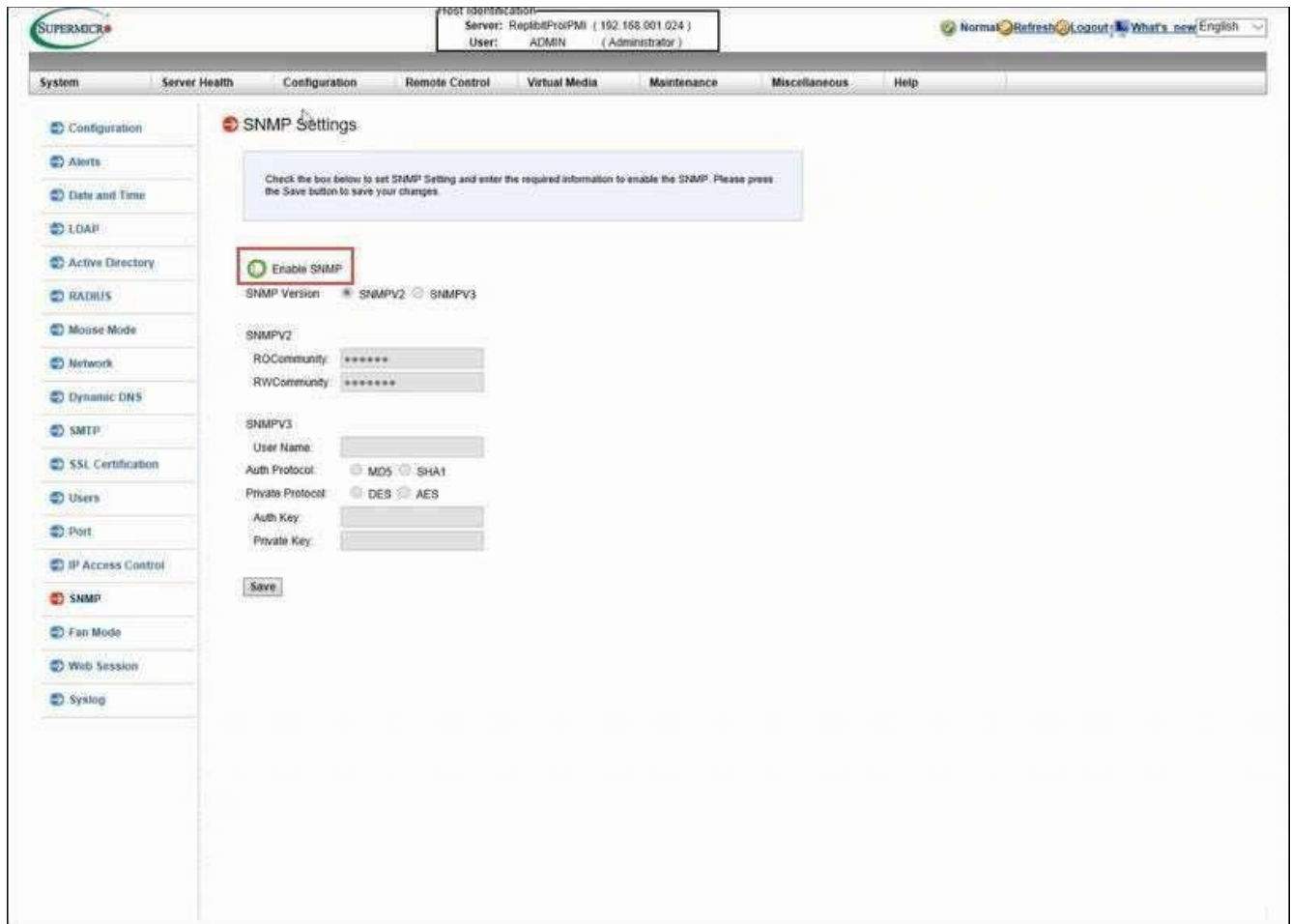
To monitor your server using the SNMP monitoring protocol, perform the following steps to enable this function:

1. From the Sensor Reading menu, click on the Configuration drop-down menu.
2. Select SNMP.



The SNMP screen appears.

- To enable SNMP monitoring, select the Enable SNMP radio button.



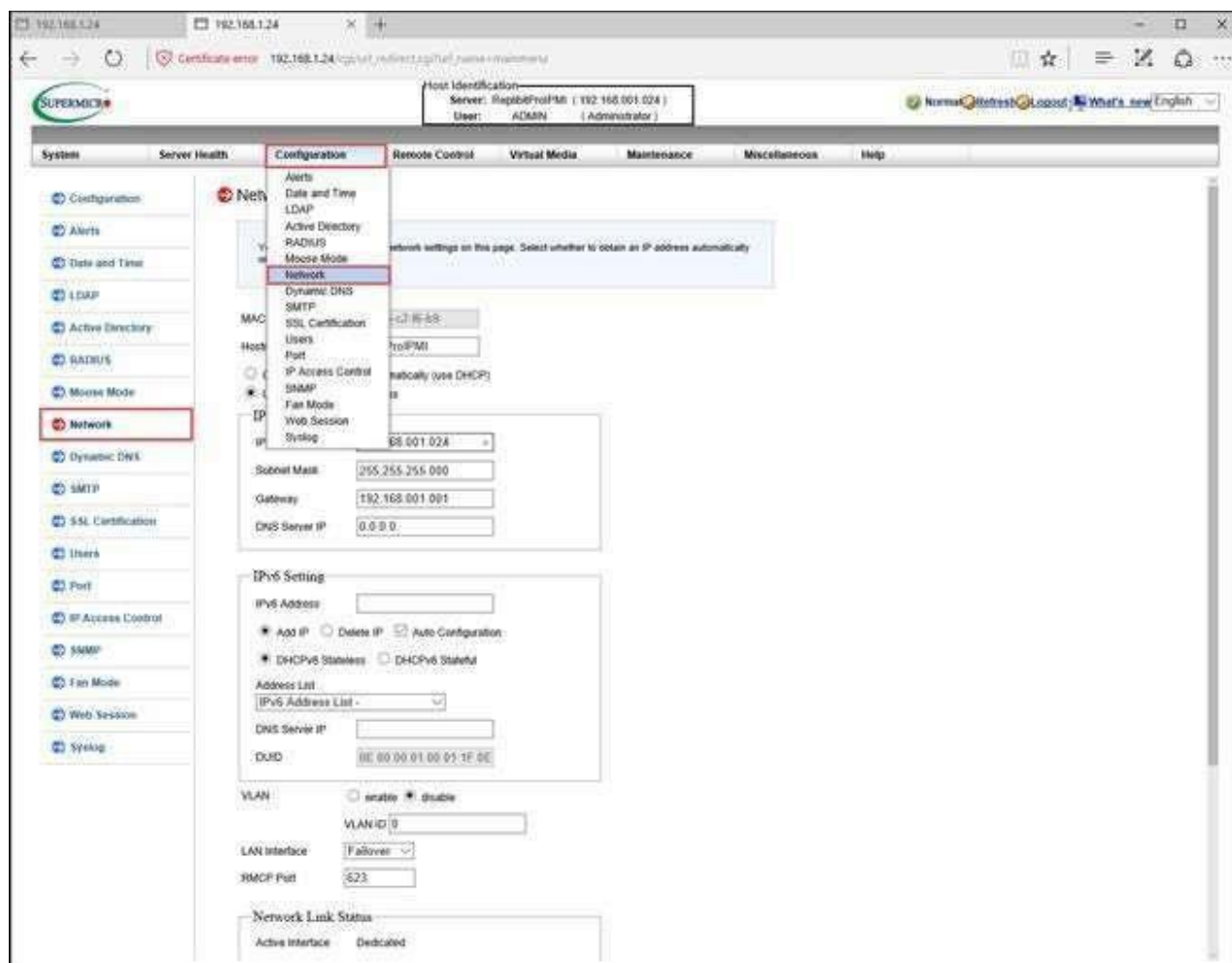
## J. Change your network settings/IP Address

As mentioned earlier in this guide, your IP Address should be shipped to you preconfigured based on your order.

If you need to change the IP Address at a later date (which is typically not needed), perform the following steps:

1. From the Network menu, select the Configuration drop-down menu.
2. Select Network.





The Network Settings screen appears.

3. From the Use the following IP address radio button, you can modify your IP Address in the IPv4Settings section.



**Network Settings**

You can view and modify the network settings on this page. Select whether to obtain an IP address automatically, or manually configure one.

MAC Address: 0c-c6-7a-c2-86-b9

Hostname: ReplibitProIPMI

☐ Obtain an IP address automatically (use DHCP)

☒ Use the following IP address

**IPv4 Setting**

IP Address: 192.168.001.024

Subnet Mask: 255.255.255.000

Gateway: 192.168.001.001

DNS Server IP: 0.0.0.0

**IPv6 Setting**

IPv6 Address:

☒ Add IP ☐ Delete IP ☒ Auto Configuration

☒ DHCPv6 Stateless ☐ DHCPv6 Stateful

Address List: IPv6 Address List -

DNS Server IP:

DUID: 0E:00:00:01:00:01:1F:0E

VLAN: ☐ enable ☒ disable

VLAN ID: 0

LAN Interface: Failover

RMCP Port: 623

**Network Link Status**

Active Interface: Dedicated

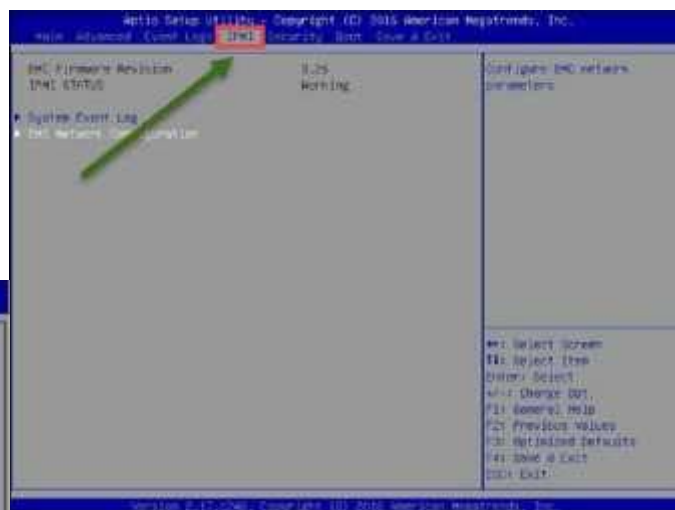
**Note:** Alternatively, you can configure IPMI Network settings from the System BIOS. For these steps, please proceed to the next Section, *"K. Setting the IPMI Address from the system BIOS."*


## K. Setting the IPMI Address from the System BIOS

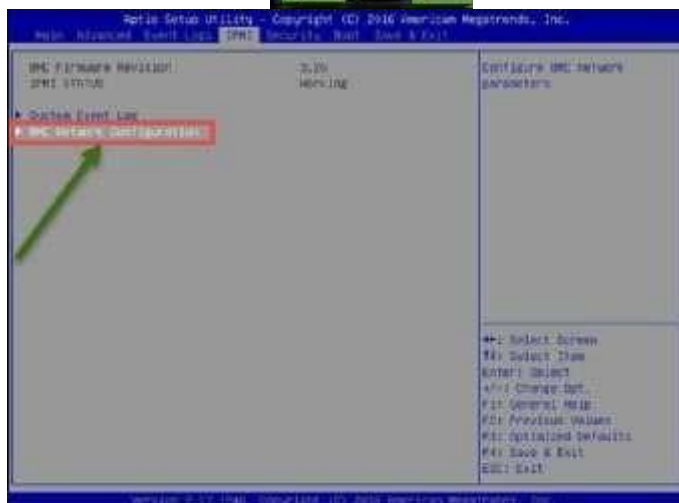
1. Power on the server.
2. Press <DEL> when prompted to enter, Setup.



3. Using the left and right cursor keys, navigate to the top menu to highlight the IPMI Tab.



4. Using  the up and



down cursor keys, highlight BMC Network Configuration.



5. Press Enter to select the Network Configuration page.

6. Also using the up and down cursor keys, highlight Update LAN Configuration.
7. Press the Space bar to toggle the setting to **[YES]**.
8. Use the Cursor keys to highlight Configuration Address Source.
9. Press the Space bar to toggle between **[DHCP]** and **[STATIC]**.
10. If you wish to set a static IP address:
  - change Configuration Address Source to **[Static]**,
  - Set the Station IP address, Subnet Mask (and (Optionally) Gateway IP Address fields).
  - Use the cursor keys to navigate the fields and enter the IP address information using the numeric keyboard.
11. Press **<F10>** to save the configuration changes and exit the BIOS setup when finished.

