

eFolder BDR for Veeam VMware Continuity Cloud Guide

Setup Continuity Cloud
Import Backup Copy Job
Restore Your VM
Accessing the Continuity Cloud Host



Version 2.0

Last Published 2018



INTRODUCTION

Thank you for choosing the eFolder Continuity Cloud for Veeam. Using the eFolder Continuity Cloud for Veeam, you can access fast off-site virtualization of your replicated VMware servers.

This guide describes how to use your Continuity Cloud Node to import a backup copy job and restore your entire VM to the eFolder Continuity Cloud environment using Veeam Backup & Replication.

Customer Support

At eFolder, we value feedback from our customers. Not only do we want to help you quickly resolve your technical issues, but we value your input and build products that incorporate your suggestions. To contact eFolder Technical Support, call **720-204-4500/1-800-352-0248** or submit questions to **VeeamSupport@eFolder.net**.

For known problem resolutions, open a browser and navigate to:

Knowledgebase: <https://support.efolder.net/hc/en-us/categories/115001613768-eFolder-for-Veeam>

Veeam Support: <https://www.veeam.com/support.html>

eFolder Support: <https://support.efolder.net/hc/en-us>

Copyright © 2018 eFolder Inc. All rights reserved.

All trademarks are the property of their respective owners.

eFolder and the eFolder logo are trademarks of eFolder Inc. Veeam and the Veeam logo are trademarks of the Veeam Software. eFOLDER MAKES NO WARRANTIES, EXPRESSED OR IMPLIED, IN THIS DOCUMENT.

CONTENTS

SECTION 1: SETUP eFOLDER CONTINUITY CLOUD	4
SECTION 2: IMPORT THE BACKUP COPY JOB	11
SECTION 3: RESTORE YOUR ENTIRE VM	16
SECTION 4: Accessing the VMware Host	25

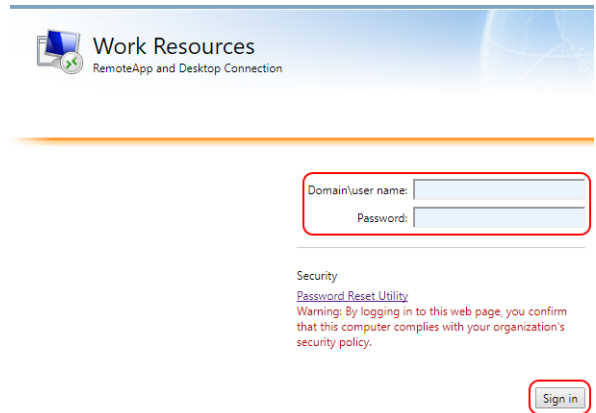
SECTION 1: eFOLDER CONTINUITY CLOUD SETUP

In Section 1, you will configure Veeam Backup & Replication to use your assigned VMware Continuity Cloud host. You will begin by logging into the VMware recovery environment that is provisioned for your account.

1. To access the console of your assigned recovery VM, use a Windows web browser to access:

<https://appgw.efsccloud.net>

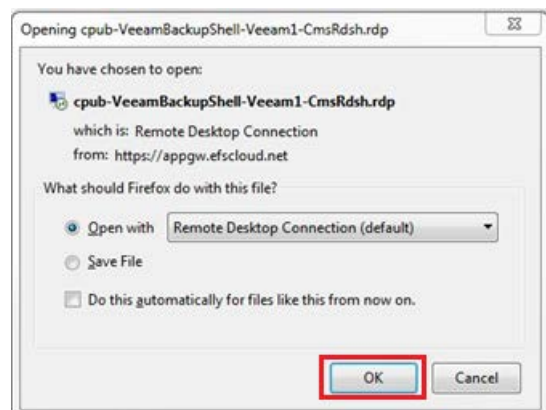
2. Then, type the original credentials you received from eFolder for your Veeam target. (Example: AD\Testpartner)



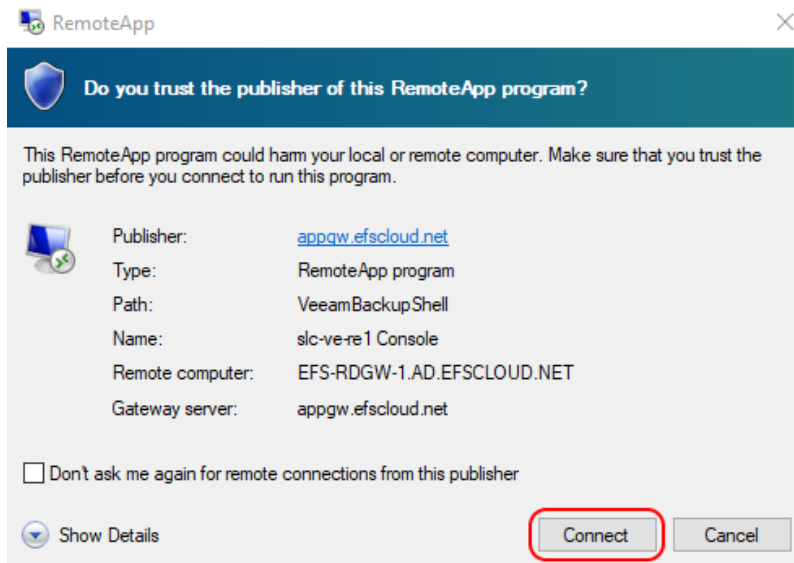
3. After you sign in to the RD Web Access gateway, click the icon for the recovery environment VM. (Example: slc-ve-re1)



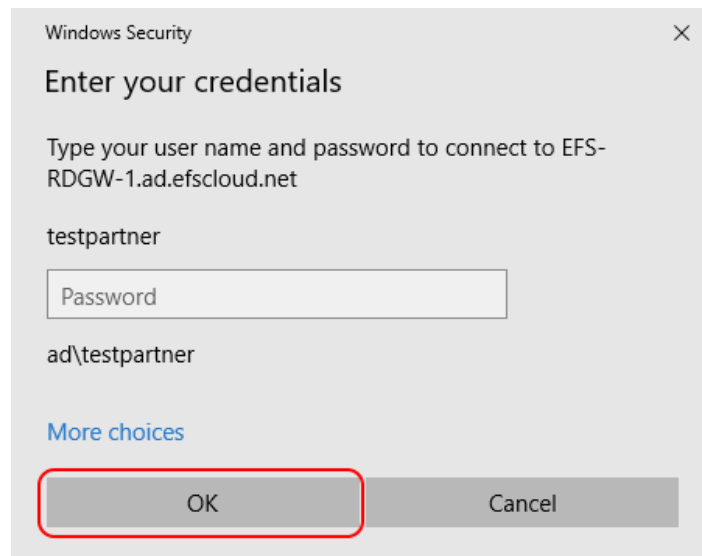
4. Click **OK** to continue.



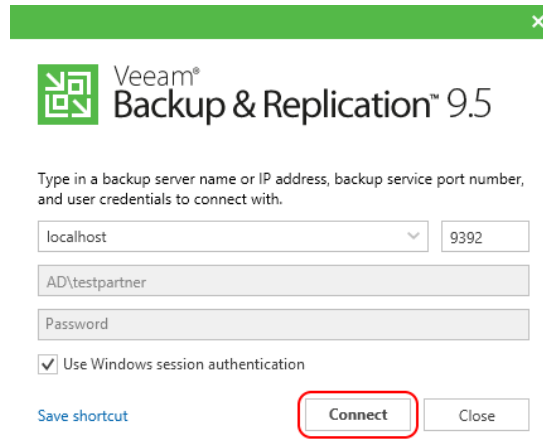
5. Click **Connect** to continue.



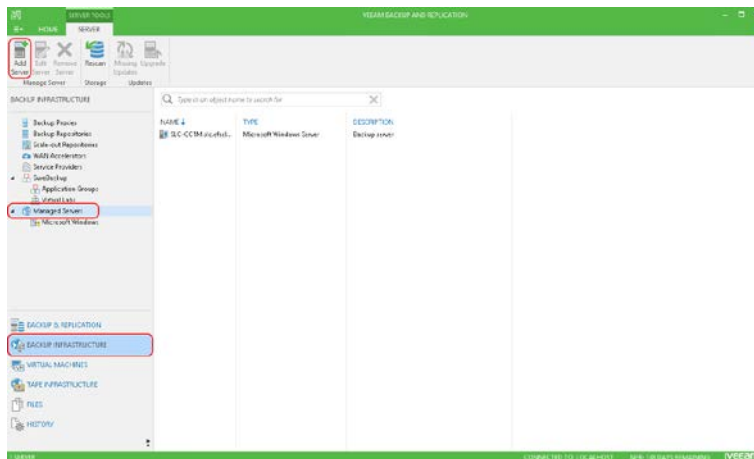
6. Type the same credentials you used to sign in previously to the RD Web Access Gateway; then, click **OK**.



- Click **OK** to launch the console.



- Select the **Backup Infrastructure** tab and select the **Managed servers** option. Then, click **Add Server** on the menu bar.

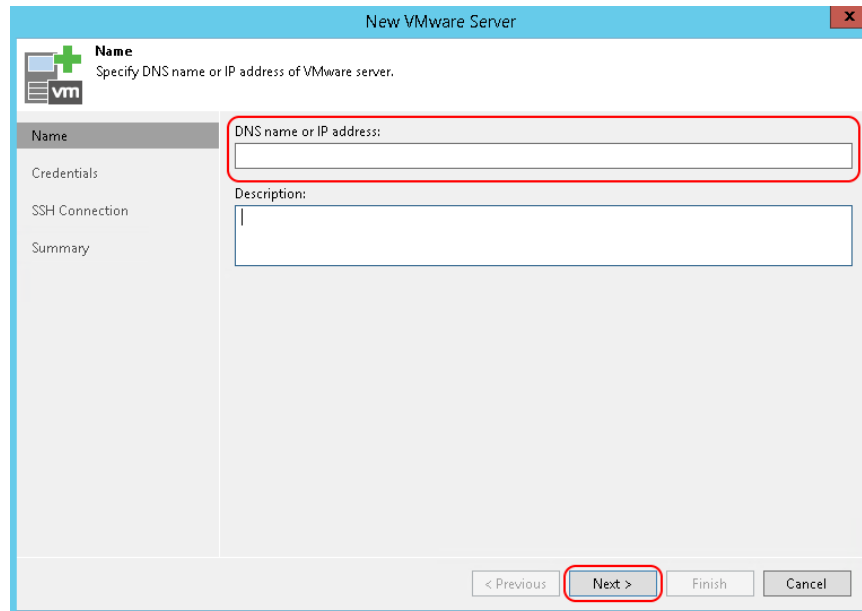


- Select **VMware vSphere** from the list of servers.



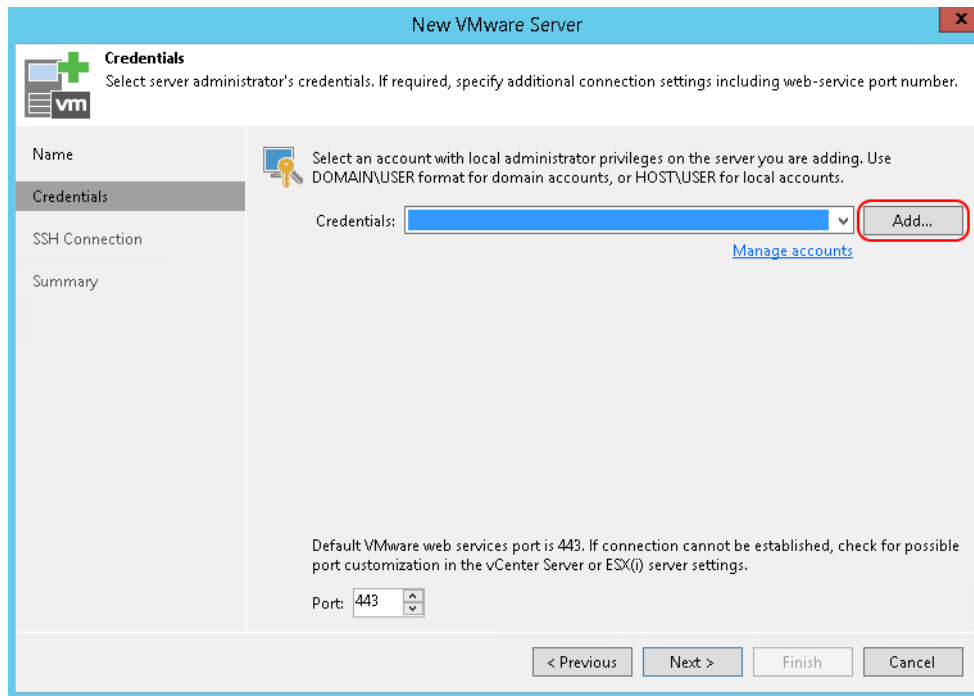
10. Type the private **IP address** of your Continuity Cloud node and a **description** in their respective fields; then, click **Next**.

NOTE: The IP address is provided by eFolder when the node is provisioned. Alternatively, it can be found within the console of the VMware Host.



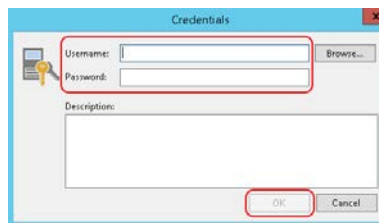
The screenshot shows a window titled "New VMware Server" with a sidebar on the left containing "Name", "Credentials", "SSH Connection", and "Summary". The "Name" section is active, showing a sub-header "Name" and a sub-instruction "Specify DNS name or IP address of VMware server." Below this are two text input fields: "DNS name or IP address:" and "Description:". The "DNS name or IP address:" field is highlighted with a red border. At the bottom of the window, there are four buttons: "< Previous", "Next >" (highlighted with a red border), "Finish", and "Cancel".

11. Click **Add** to type in your credentials.

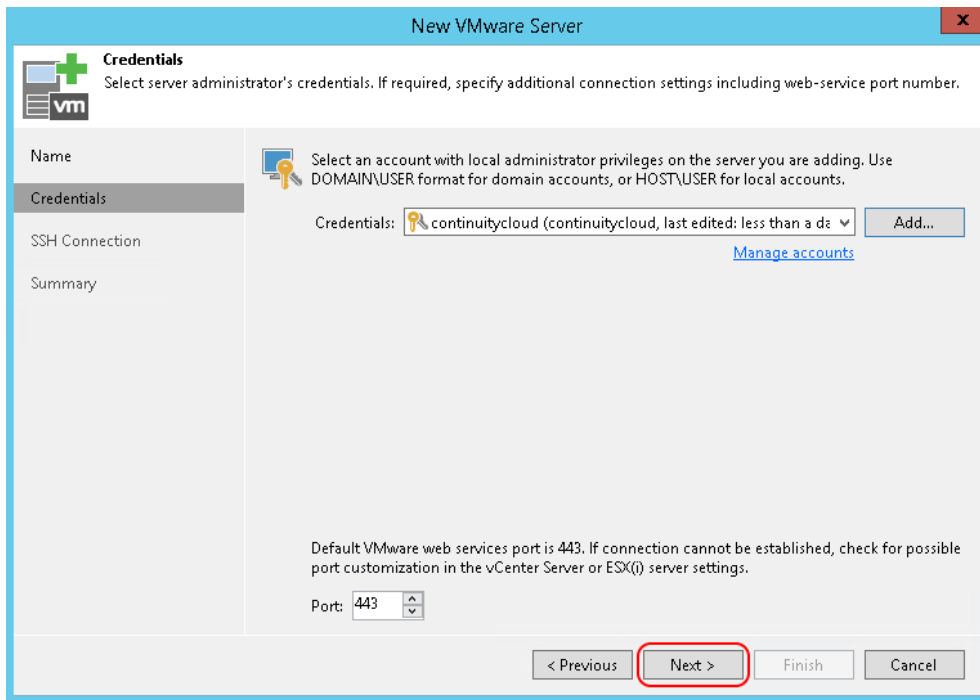


12. Type the username and password received from eFolder in their respective fields; then, click **OK**.

For example: *continuitycloud*



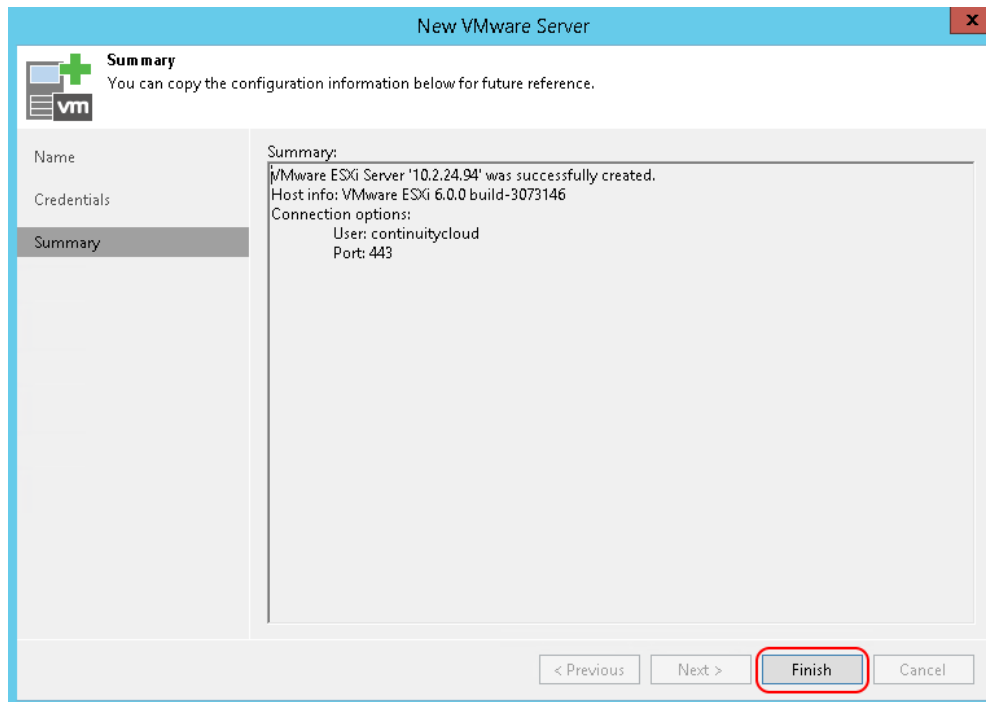
13. The credentials will be shown on the drop-down list. Now click **Next**.



14. A Security Warning is displayed. Click **Connect**.



- Review the *Summary* to confirm that the VMware server was successfully created; then, click **Finish**.

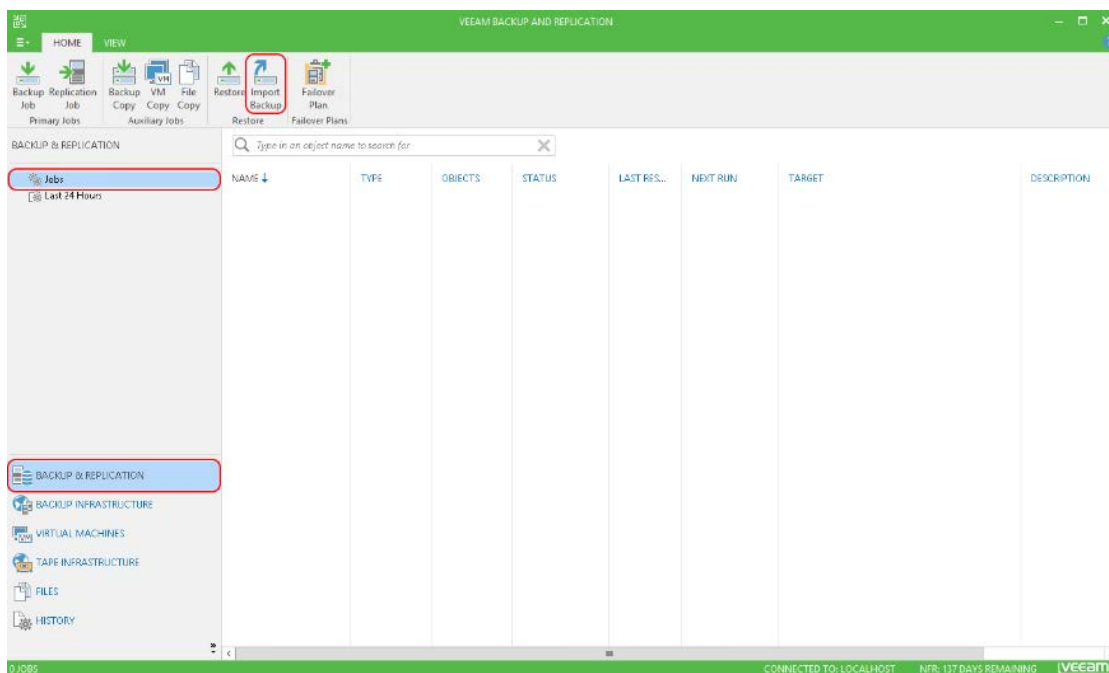


This completes Section 1 in which you configured Veeam Backup & Replication to use your assigned VMware Continuity Cloud Server. Next, import and decrypt your backup copy job in Section 2.

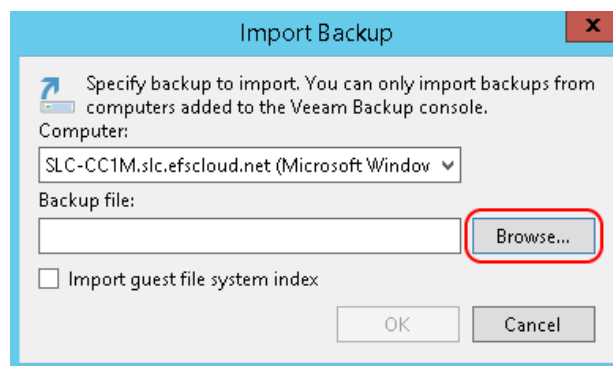
SECTION 2: IMPORTING AND DECRYPTING THE BACKUP COPY JOB

In Section 2, you will import and decrypt your backup copy job. This is done through Veeam Backup & Replication installed on your assigned VMware recovery environment.

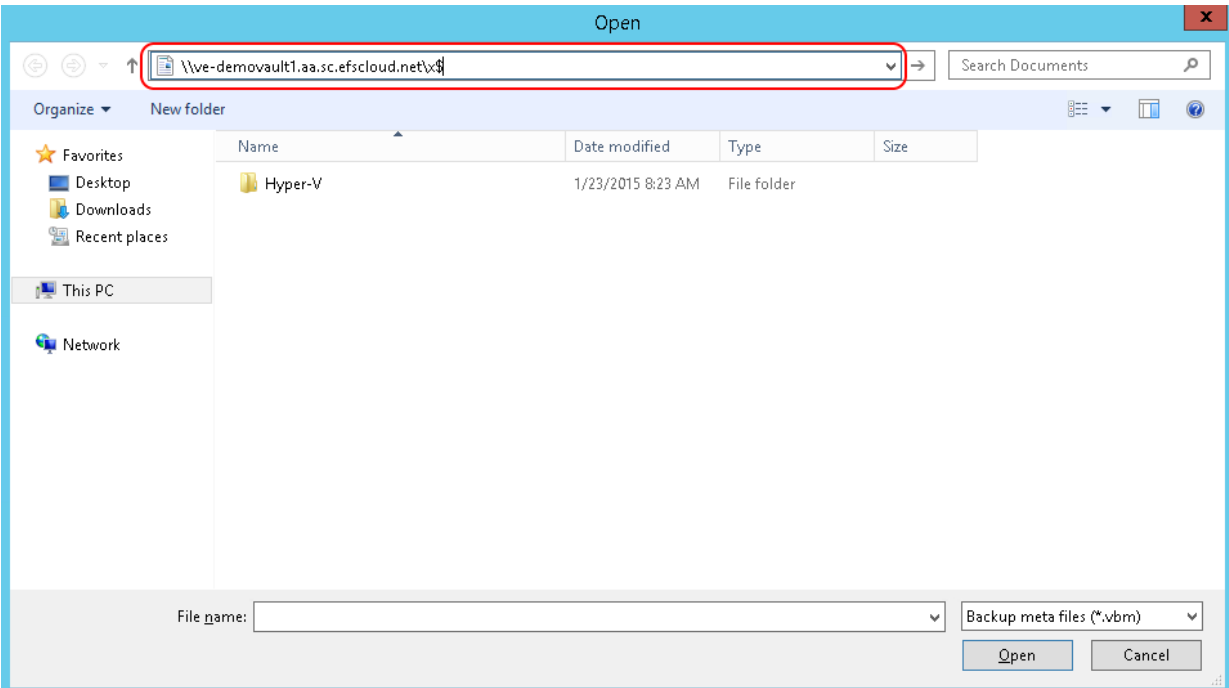
1. Log into the VMware recovery environment using the same steps at the beginning of Section 1.
2. Click the **Backup & Replication** tab on the left and select the **Jobs** option; then, click **Import Backup** on the menu bar.



3. Click **Browse**.



4. Enter the path to the X volume on your eFolder Veeam Cloud Target in the address bar using the following format: \\<vault name>.aa.sc.efsccloud.net\x\$



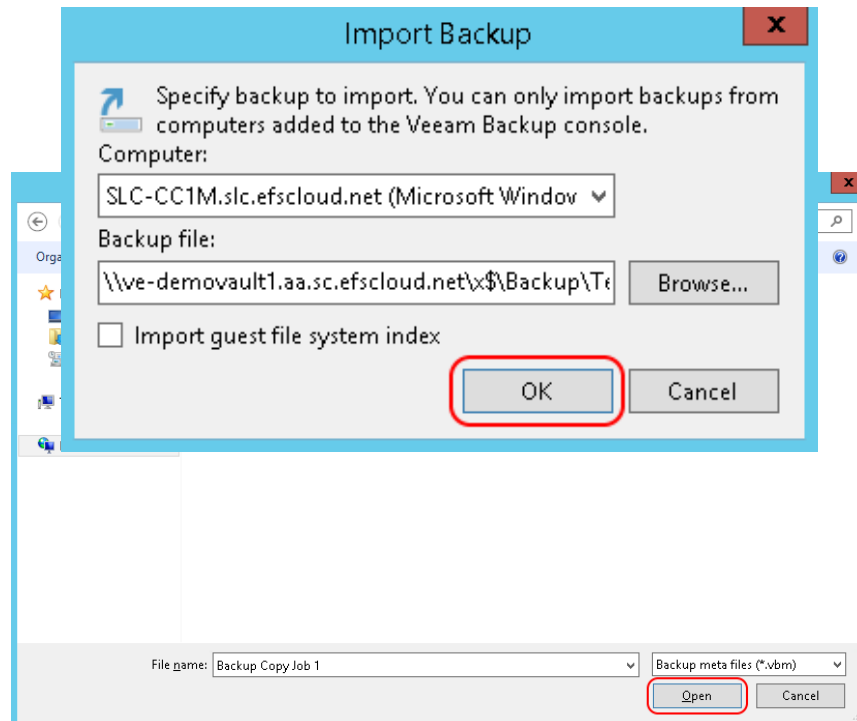
5. When prompted, enter your **AD credentials**. Example: AD\Testpartner

NOTE: These are the same credentials us would use to log into the eFolder Veeam cloud console to manage your tenants.

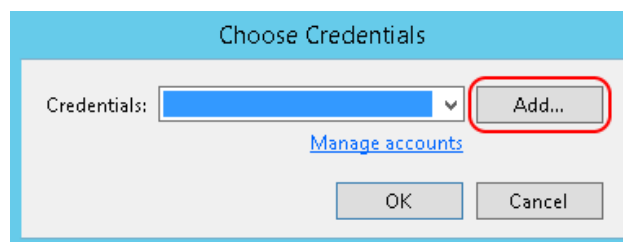
Domain: SLC-CC1M

Remember my credentials

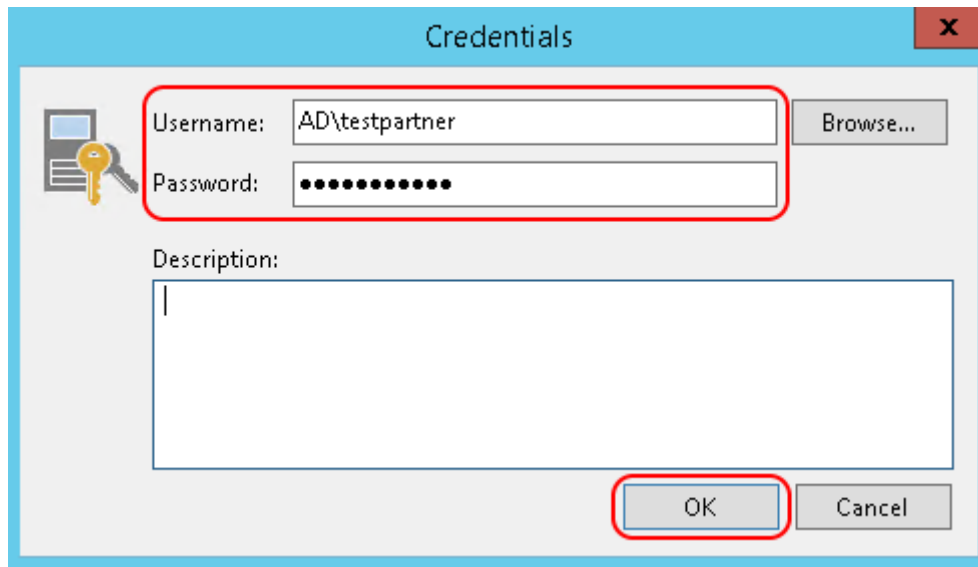
- Browse to the location of the backup job you wish to import. Select the VBM file and click **Open**.
- Click **OK**.



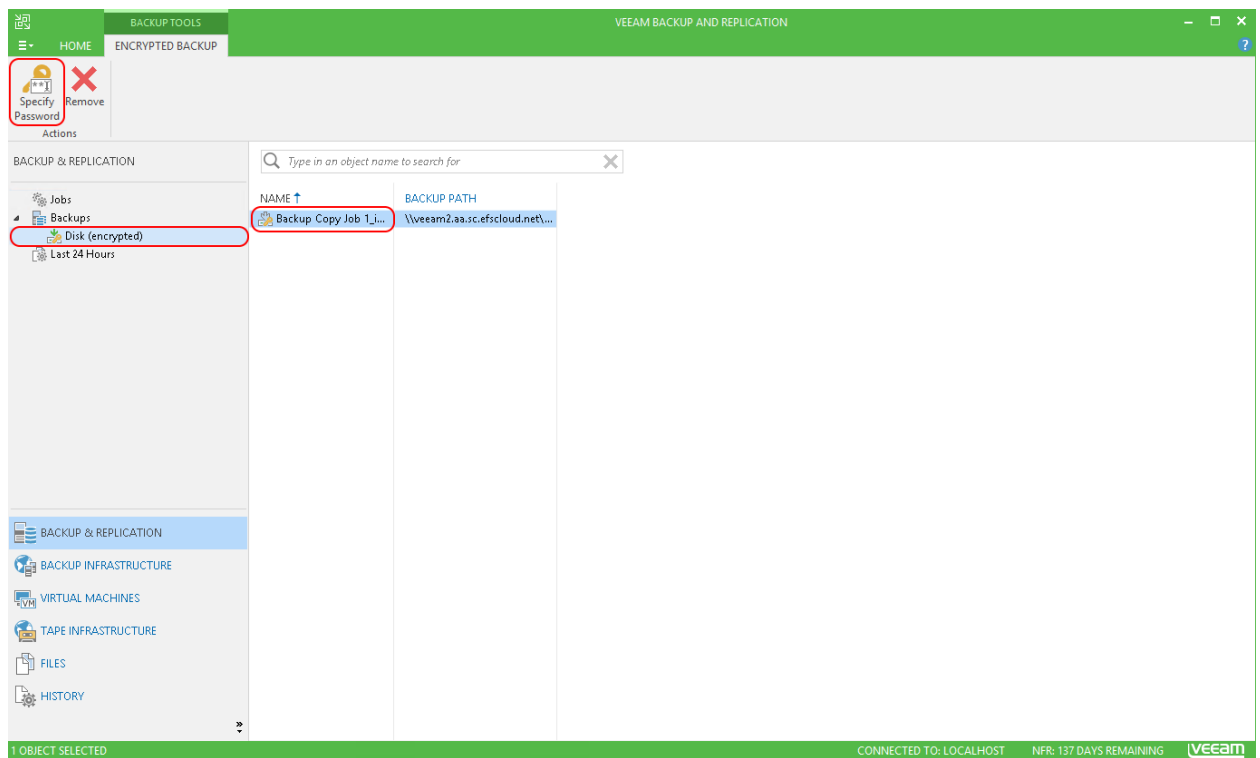
- You will be prompted for credentials once more. Click **Add**.



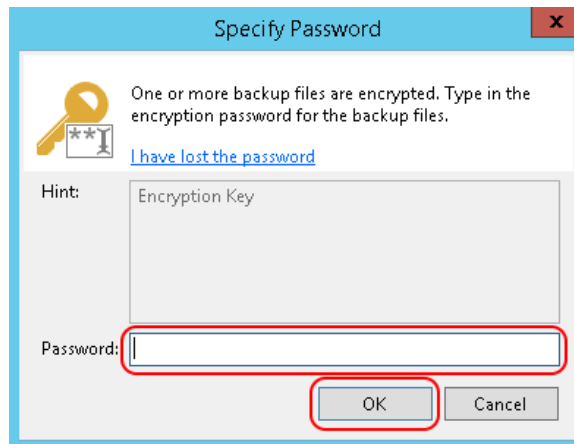
- Enter your **AD** username and password. Click **OK**.



- Click **OK** again to start the import. Your backup job should now be listed in **Backups** under the **Encrypted** section.
- Select the **Encrypted** option below **Backups**; then, select your backup copy job and click **Specify Password** on the menu bar



- Enter the encryption key associated with the Backup Copy Job and click **OK**.

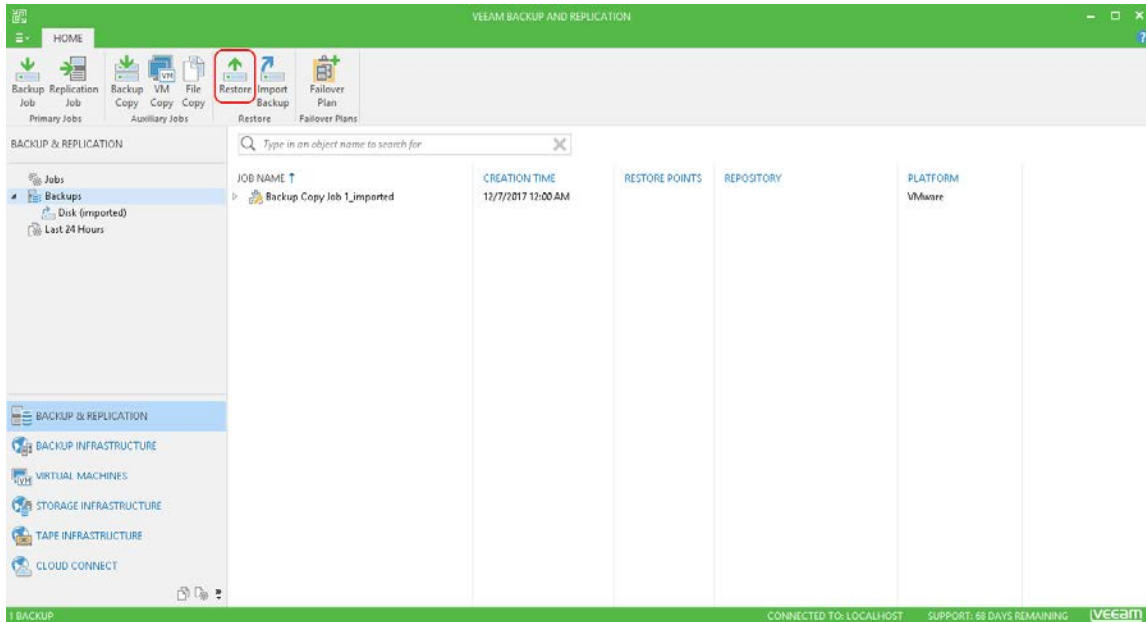


This completes Section 2. Your backup copy job has been imported and should now be listed under **Backups** in the **Disk (imported)** section. Next, proceed to Section 3 to restore your entire VM.

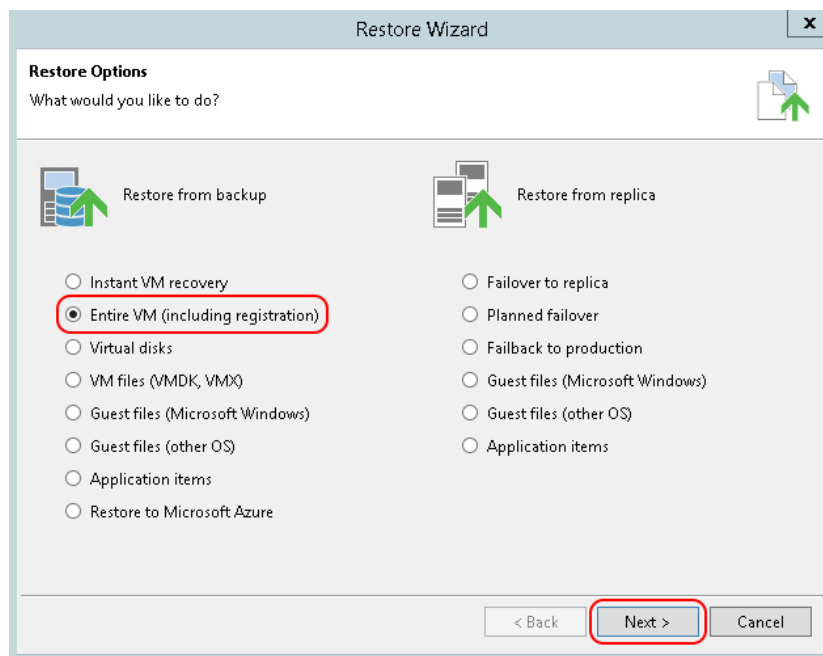
SECTION 3: RESTORING YOUR ENTIRE VM

In Section 3, you will restore your VM. The restore process will allow you to select the virtual machines you wish to restore, the desired restore points, target host, storage, and networking options.

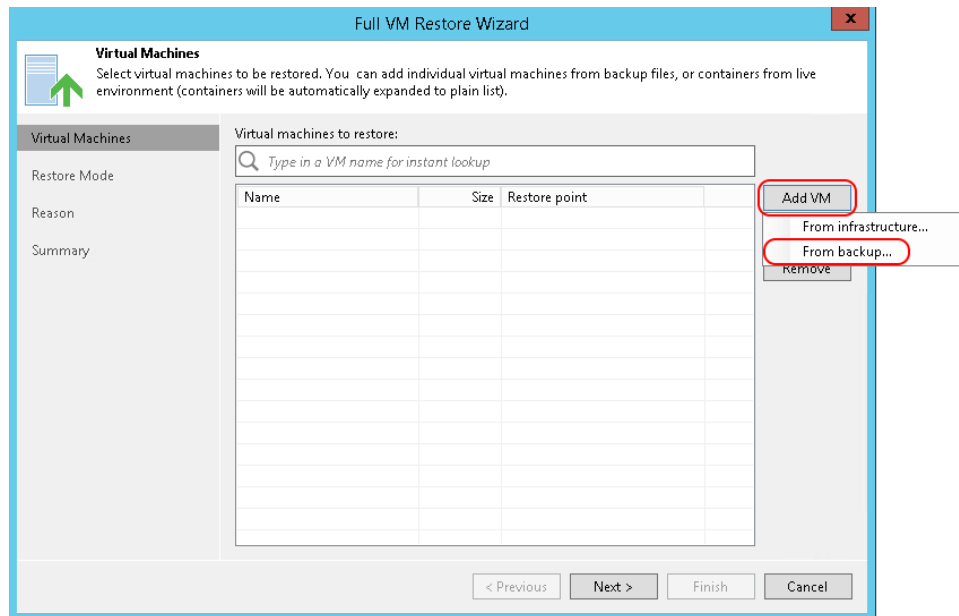
1. To begin, click the **Restore** button on the top ribbon.



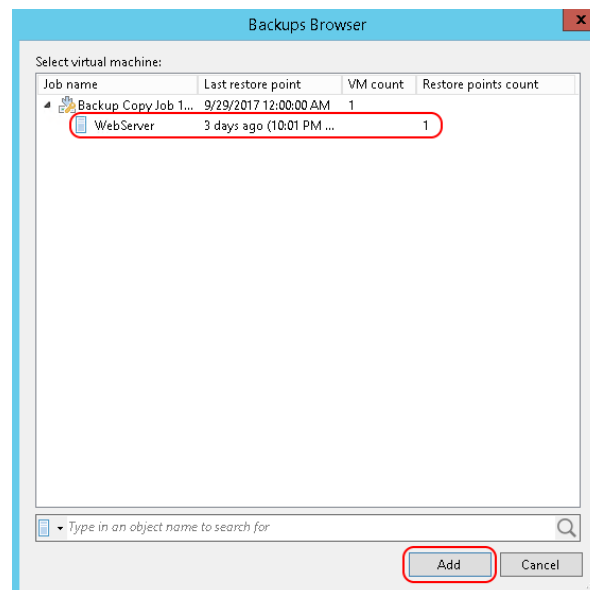
2. Select **Entire VM** in the *Restore from backup* list and click **Next**.



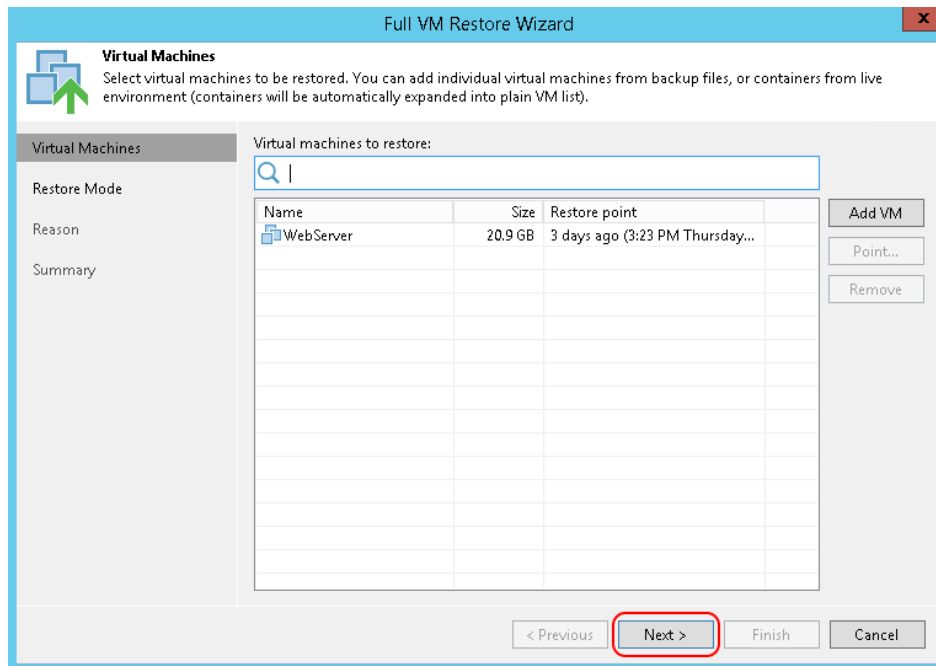
3. On the *Full VM Restore* page, click **Add VM** and select **From Backup** in the drop-down list.



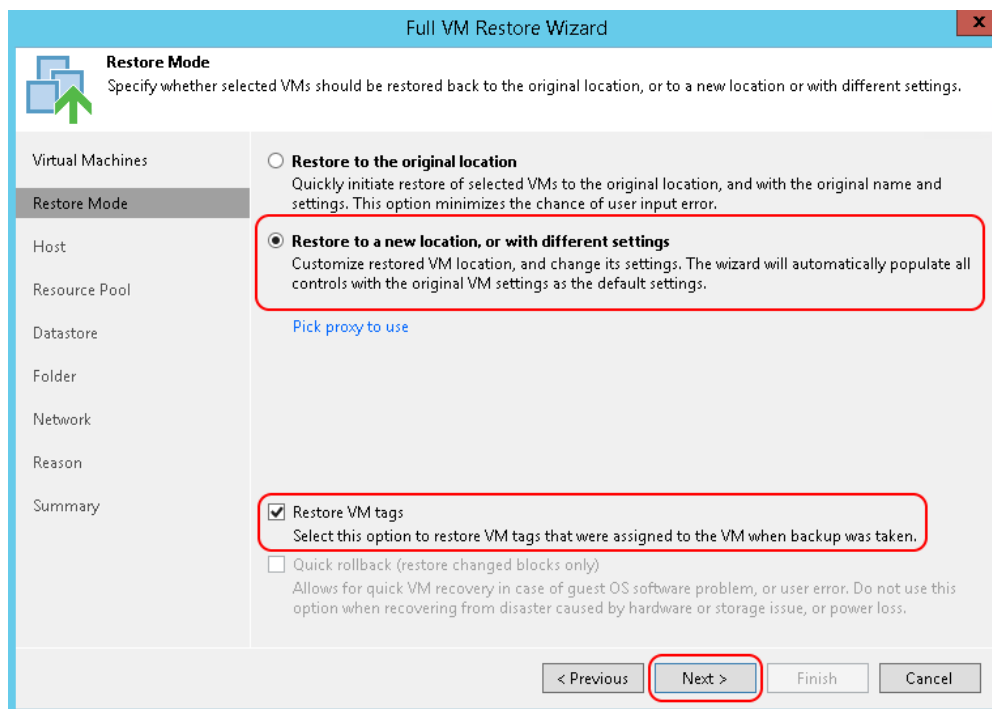
4. In the *Backups Browser*, select your **virtual machine** below the **Backup Copy Job** option; then, click **Add**.



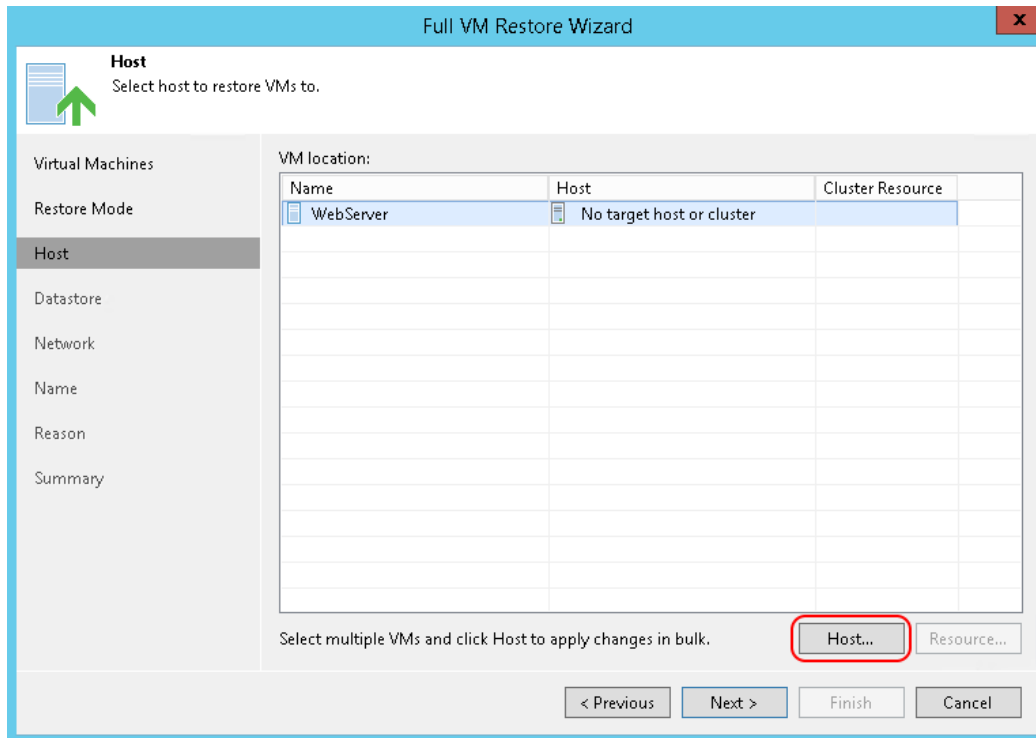
- The wizard will automatically select the most recent restore point. If you wish to use a different restore point, click the **Point** button on the right. Otherwise, Click **Next**.



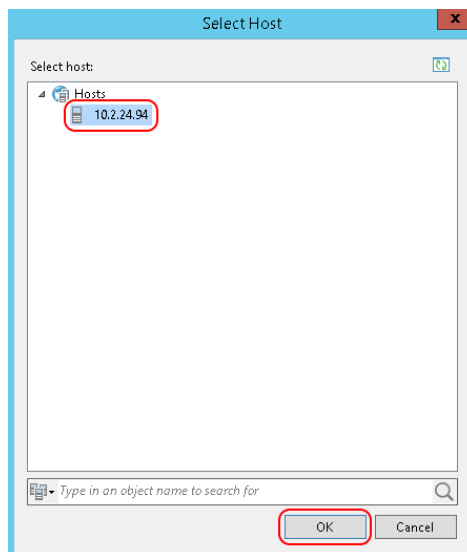
- Select **Restore to a new location, or with different settings** AND check the box for **Restore VM tags**; then, click **Next**.



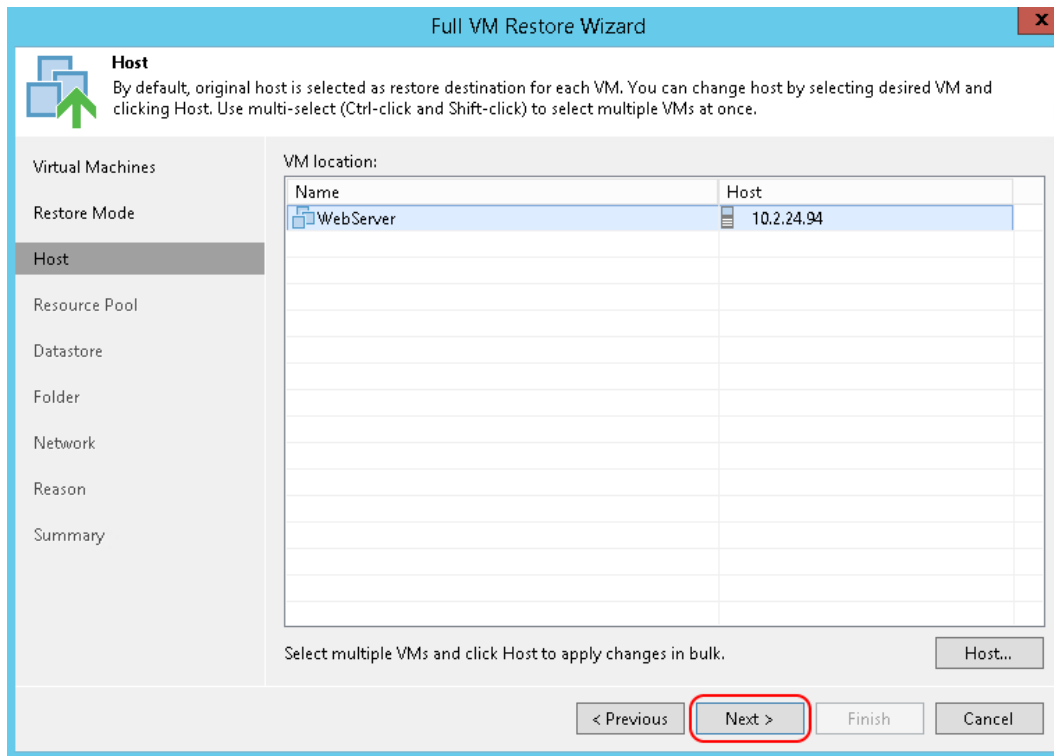
7. Click **Host...** to select your host server.



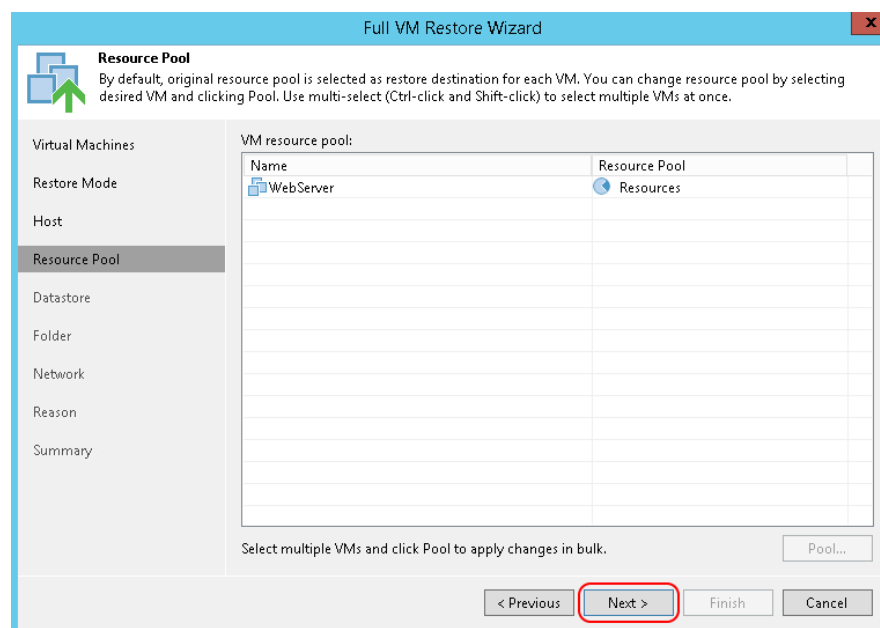
8. Select your host server (IP address) below the **Hosts** option; then, click **OK**.



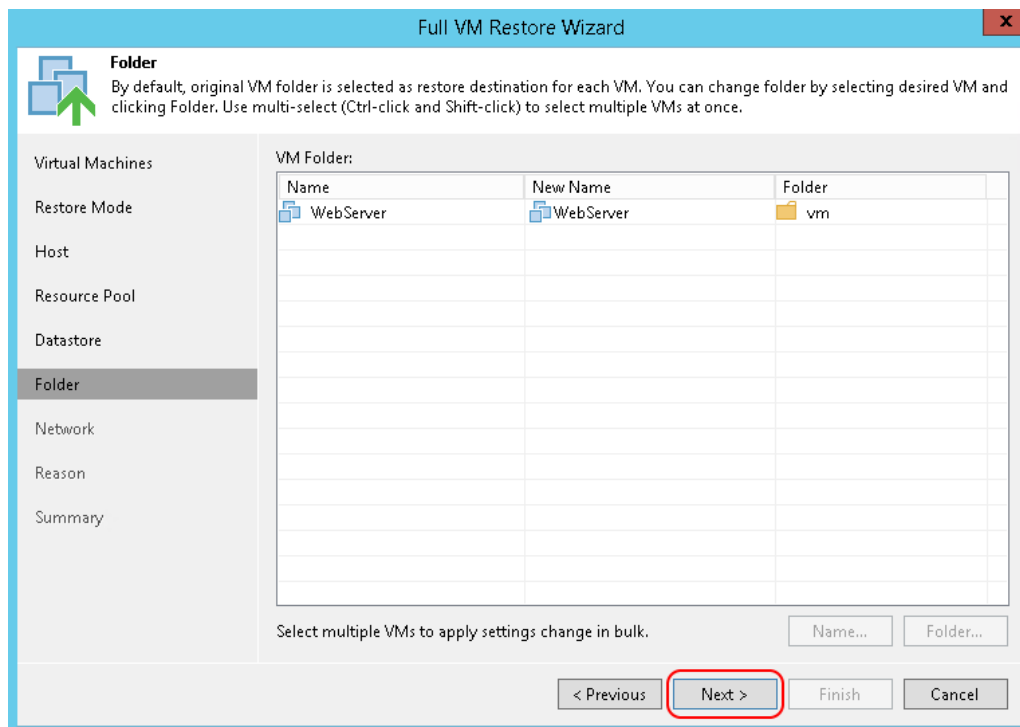
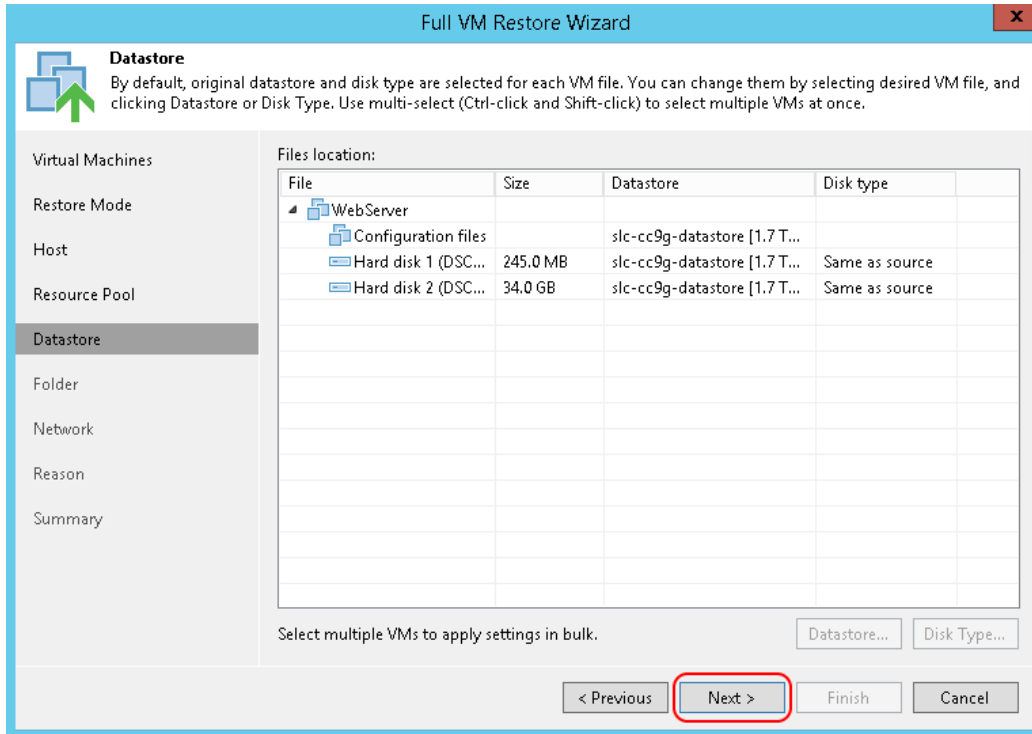
9. Click **Next** to accept the selected host server.



10. Click **Next** to accept the default **Resource Pool**.

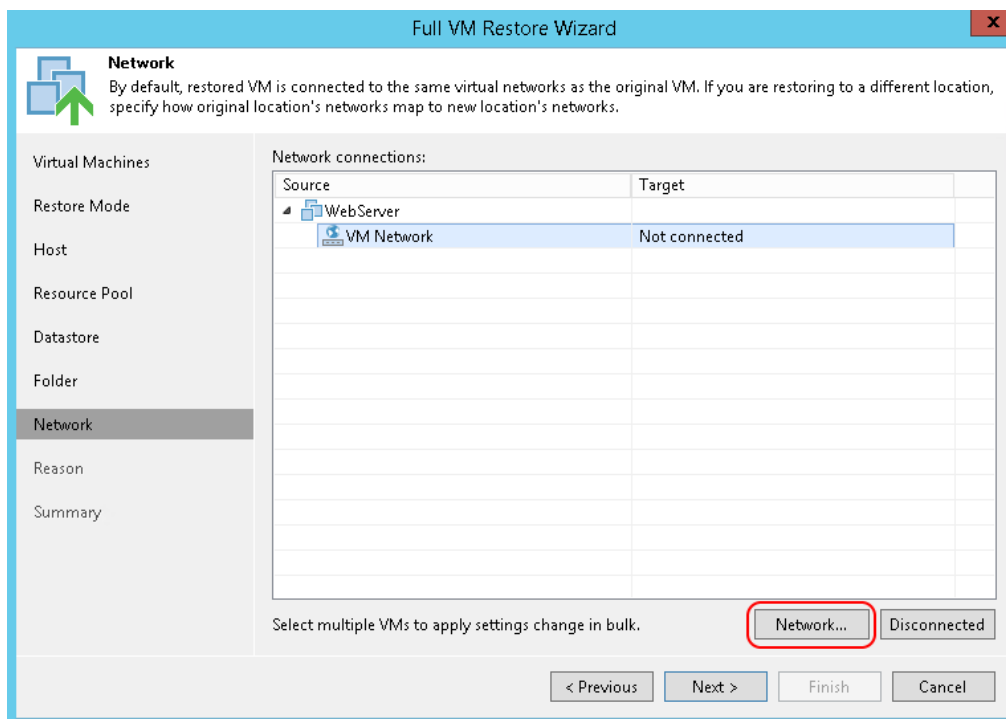


- If you wish to change the storage location for your VM files, click **Datastore**. You can also adjust the provisioning style of the disks (Thin/Thick) by clicking the **Disk Type** button. Otherwise, click **Next**.

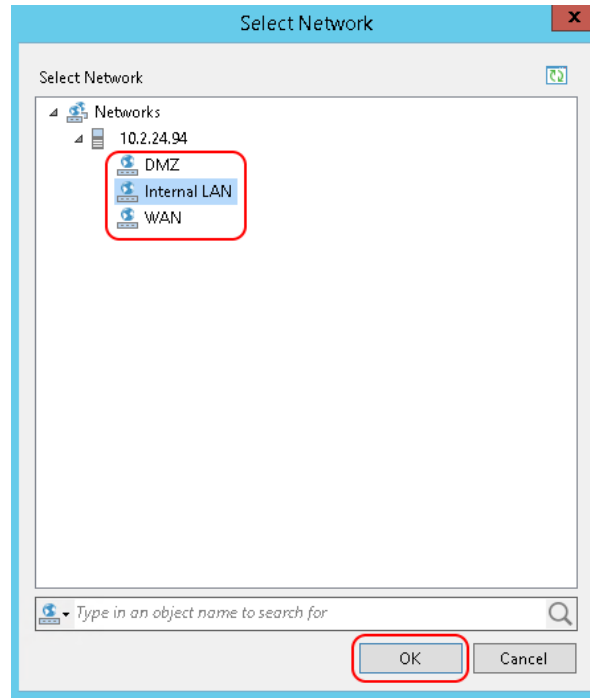


- Click **Next** to accept the default root folder for storing the virtual machine.

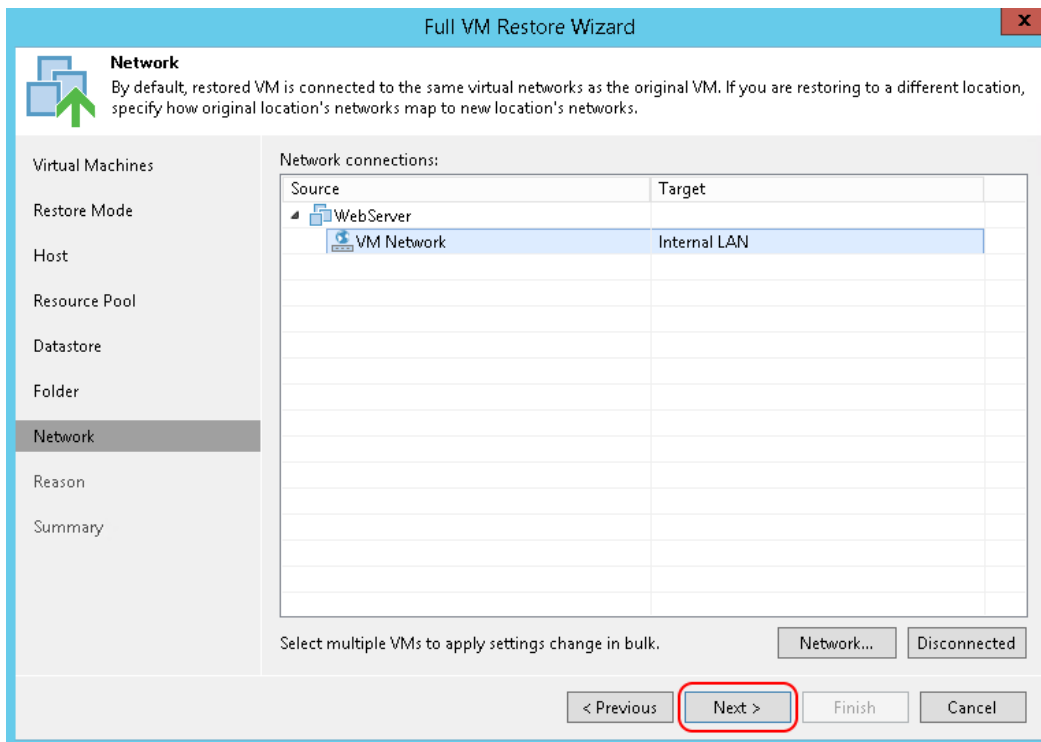
13. Select the VM and click **Network**.



14. Select the network you would like this VM to be attached to; then, click **OK**.

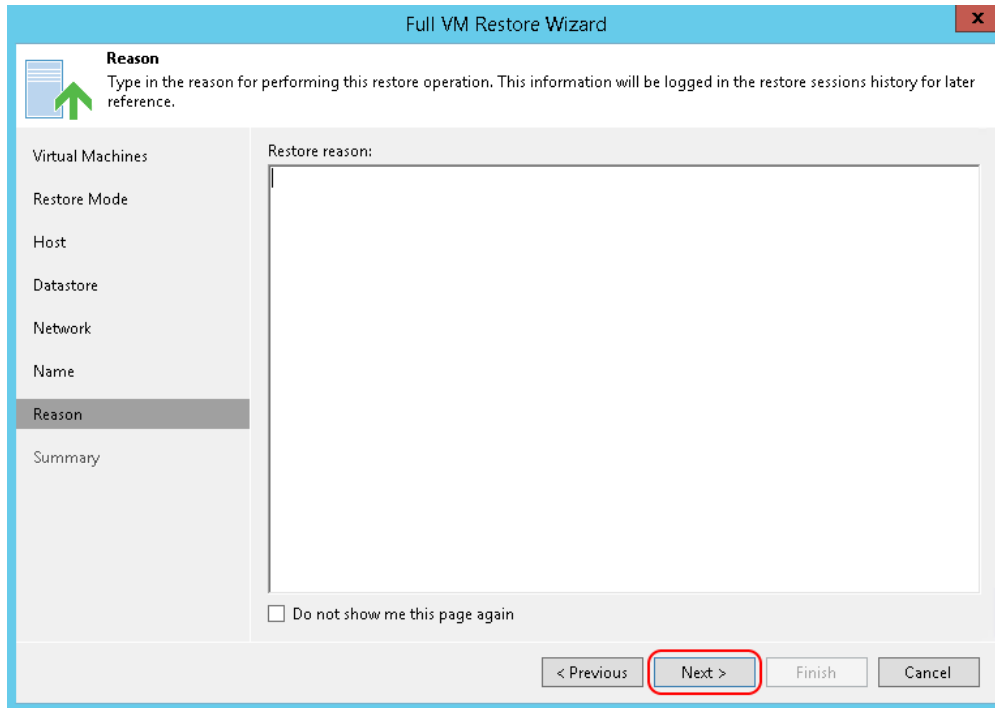


15. Click **Next** to continue.

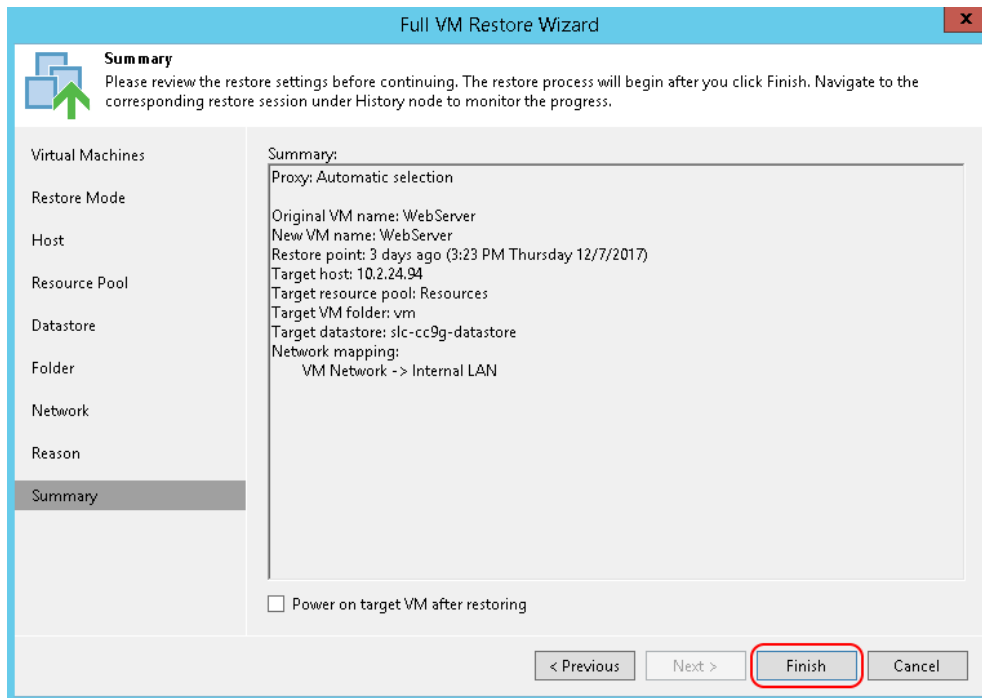


NOTE: If your VM has multiple network adapters you may configure each one to point to the desired network. Example: NIC1 -> Internal-LAN; NIC2 -> WAN-DMZ

16. Click **Next** to continue.



17. Review the summary and ensure all the selections are correct. Once you have confirmed the selections are correct, click **Finish** to begin the restore.



SECTION 4: Accessing the VMware Host

Management of your restored VMs is done through the VMware vCenter console. Please use the link below to access vCenter and log in using your AD credentials. (Example: AD\TestPartner)

<https://vcenter.sl.c.efscloud.net/vsphere-client/?csp>

This completes the eFolder Continuity Cloud setup, the import and decryption of the backup copy job, and the restore VM process. If you have any problems during this procedure or notice errors in the log file, please call eFolder Technical Support at **720-204-4500/1-800-352-0248** or submit questions to VeamSupport@eFolder.net.